

HAVRE, MONTANA

AL-5575 (FAA)

21280

WAAS CH 48816 W26A	APP CRS 257°	Rwy Idg 5205 TDZE 2586 Apt Elev 2591
--	------------------------	---

RNAV (GPS) RWY 26

HAVRE CITY-COUNTY (HVR)

RNP APCH-GPS.

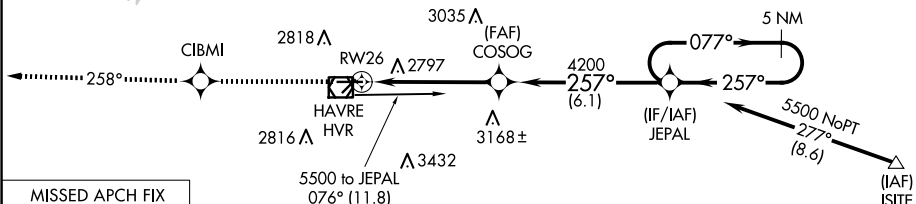
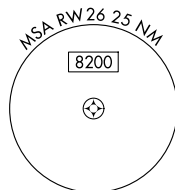


For uncompensated Baro-VNAV systems,
LNAV/VNAV NA below -20°C or above 54°C.

MISSED APPROACH: Climb to 8000 direct CIBMI and on track 258° to ETOHO and hold, continue climb-in-hold to 8000.

ASOS
135.225

SALT LAKE CENTER
133.4 285.4

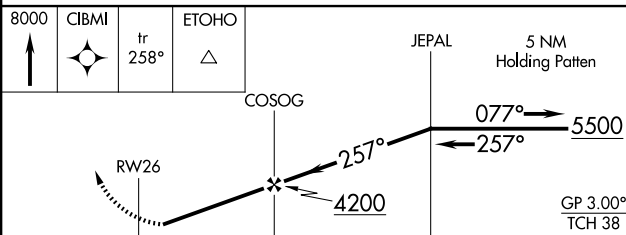
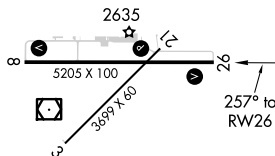
UNICOM
122.8 (CTAF) **L**

MISSED APCH FIX



4067 Δ

ELEV 2591	D	TDZE 2586
-----------	----------	-----------



CATEGORY		A	B	C	D
LPV	DA	2836-3/4		250 (300-3/4)	
INAV/ VNAV	DA	3097-13/4 511 (600-13/4)			
INAV	MDA	3060-1 474 (500-1)		3060-11/4 474 (500-11/4)	3060-11/2 474 (500-11/2)
CIRCLING		3080-1 489 (500-1)	3120-1 529 (600-1)	3360-21/4 769 (800-21/4)	3740-3 1149 (1200-3)

REIL Rwy 8 and 26 **L**
MIRL Rwy 8-26
MIRL Rwy 3-21 **L**

HAVRE, MONTANA

Orig-C 07OCT21

HAYRE CITY-COUNTY (HVR)

48°33'N-109°46'W

RNAV (GPS) RWY 26

NW-1, 07 AUG 2025 to 04 SEP 2025

NW-1, 07 AUG 2025 to 04 SEP 2025