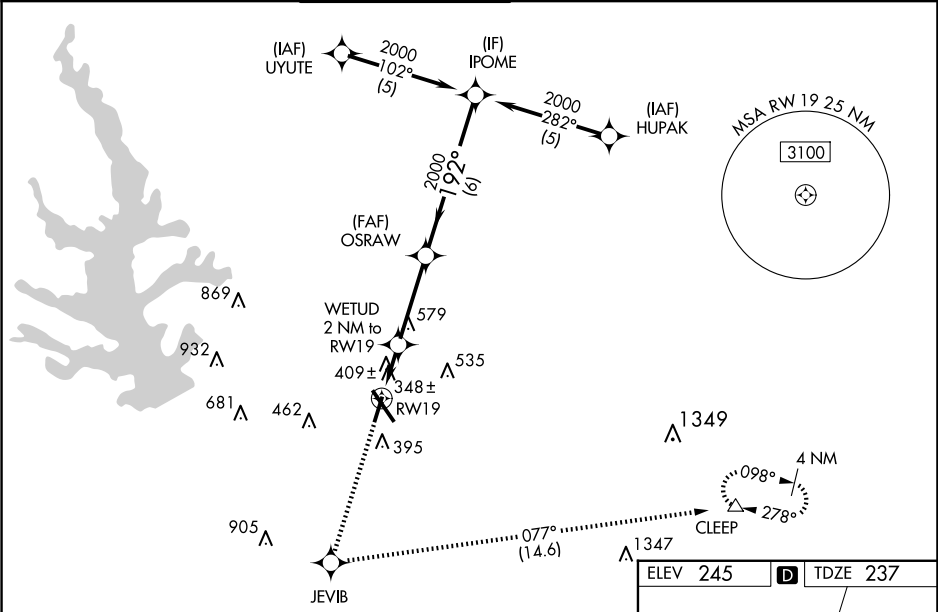


WAAS CH 90219 W19A	APP CRS 192°	Rwy Idg TDZE 237 Apt Elev 245
--	------------------------	---

RNAV (GPS) RWY 19

CONROE/NORTH HOUSTON RGNL (C'XO)

RNP APCH - GPS.					MISSED APPROACH: Climb to 3100 direct JEVIB and left turn on track 077° to CLEEP and hold.	
▼ Rwy 19 helicopter visibility reduction below ¾ SM NA. For uncompensated Baro-VNAV systems, LNAV/VNAV NA below -15°C or above 54°C. When local altimeter setting not received, use David Wayne Hooks Meml altimeter setting and increase LPV DA to 584 feet and all visibilities ½ SM. Increase LNAV/VNAV DA to 739 feet; increase all MDAs 60 feet and LNAV visibility Cat C/D ½ SM, and Circling visibility Cat C/D ¼ SM. Baro-VNAV and VDP NA when using David Wayne Hooks Meml altimeter setting.						
ATIS 118.325	HOUSTON APP CON 119.7 281.4	CONROE TOWER ★ 124.125 (CTAF) 0	GND CON 120.45	CLNC DEL 120.45	CLNC DEL 119.55 (When twr closed)	



3100	JEVIB	CLEEP
↑	✦	△
	tr 077°	

OSRAW

2000

IPOME

2000

WETUD
2 NM to RW19

1.2 NM to RW19

900

192°

2000

GP 3.00°
TCH 49

CATEGORY	1.2 NM	0.8 NM	3.3 NM	6 NM	
	A		B	C	D
LPV DA	527-1 290 (300-1)				
LNAV/VNAV DA	682-1½ 445 (500-1½)				
LNAV MDA	660-1 423 (500-1)		660-1¼ 423 (500-1¼)		
CIRCLING	700-1 455 (500-1)		880-1¾ 635 (700-1¾)	960-2¼ 715 (800-2¼)	

REIL Rwy 32 ①

MIRL Rwy 1-19

HIRL Rwy 14-32 ①