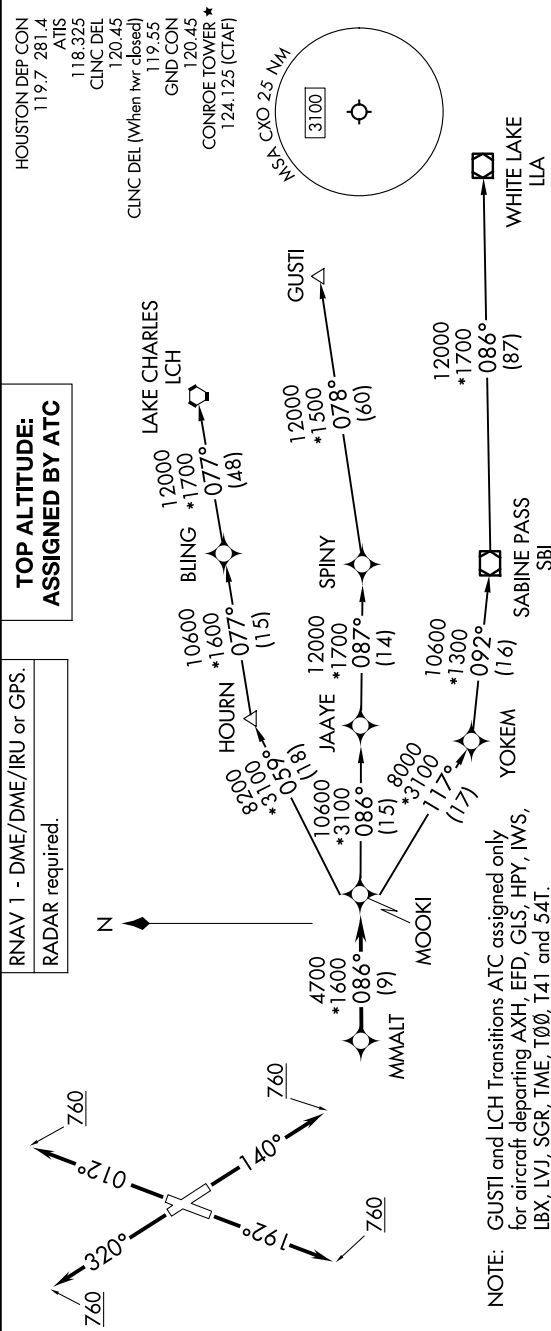


SC-5, 07 AUG 2025 to 04 SEP 2025



DEPARTURE ROUTE DESCRIPTION

- TAKEOFF RUNWAY 1: Climb on heading 012° to 760, for RADAR vectors to MMALT, thence. . . .
- TAKEOFF RUNWAY 14: Climb on heading 140° to 760, for RADAR vectors to MMALT, thence. . . .
- TAKEOFF RUNWAY 19: Climb on heading 192° to 760, for RADAR vectors to MMALT, thence. . . .
- TAKEOFF RUNWAY 32: Climb on heading 320° to 760, for RADAR vectors to MMALT, thence. . . .
- . . . on track 086° to MOOKI, then on (transition). Maintain ATC assigned altitude.
- Expect filed altitude 10 minutes after departure.

TAKEOFF MINIMUMS  
Rwys 1, 14, 19, 32: Standard with  
minimum climb of 500'/NM to 760.

NOTE: Chart not to scale.

SC-5, 07 AUG 2025 to 04 SEP 2025