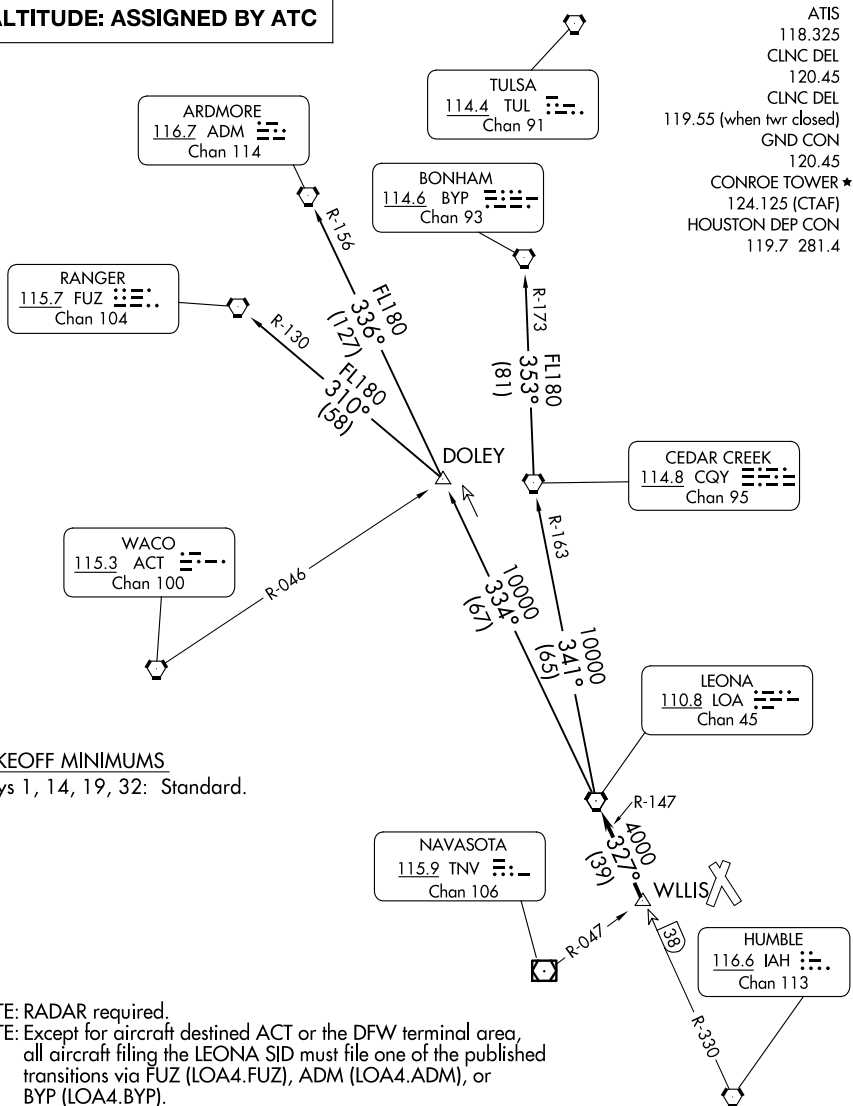


## LEONA FOUR DEPARTURE

HOUSTON, TEXAS

**TOP ALTITUDE: ASSIGNED BY ATC**



ATIS  
 118.325  
 CLNC DEL  
 120.45  
 CLNC DEL  
 5 (when twr closed)  
 GND CON  
 120.45  
 CONROE TOWER ★  
 124.125 (CTAF)  
 DUSTON DEP CON  
 119.7 281.4

## TAKEOFF MINIMUMS

Rwys 1, 14, 19, 32: Standard.

NOTE: RADAR required.

NOTE: Except for aircraft destined ACT or the DFW terminal area, all aircraft filing the LEONA SID must file one of the published transitions via FUZ (LOA4.FUZ), ADM (LOA4.ADM), or BYP (LOA4.BYP).

NOTE: RANGER TRANSITION: For aircraft overflying west/northwest of the DFW terminal area FL240 and above.

NOTE: ARDMORE TRANSITION: For aircraft overflying north/northwest of the DFW terminal area FL240 and above.

NOTE: BONHAM TRANSITION: For aircraft overflying/landing TUL VORTAC FL240 and above.

NOTE: Chart not to scale.

(CONTINUED ON FOLLOWING PAGE)

## LEONA FOUR DEPARTURE

(LOA4.LOA) 07OCT21

HOUSTON, TEXAS

CONROE/NORTH HOUSTON RGNL (CXO)

SC-5, 07 AUG 2025 to 04 SEP 2025