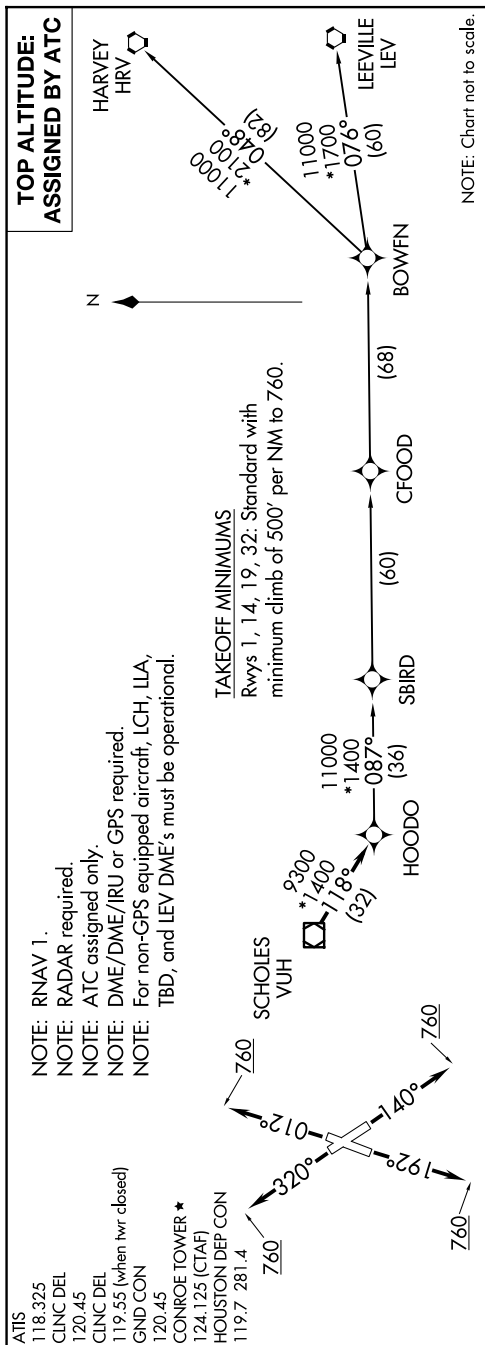


## HOODO SEVEN DEPARTURE (RNAV)



## DEPARTURE ROUTE DESCRIPTION

TAKEOFF RUNWAY 1: Climb on heading 012° to 760, for RADAR vectors to VUH VOR/DME, thence . . . .  
TAKEOFF RUNWAY 14: Climb on heading 140° to 760, for RADAR vectors to VUH VOR/DME, thence . . . .  
TAKEOFF RUNWAY 19: Climb on heading 192° to 760, for RADAR vectors to VUH VOR/DME, thence . . . .  
TAKEOFF RUNWAY 32: Climb on heading 320° to 760, for RADAR vectors to VUH VOR/DME, thence . . . .

BOWFN TRANSITION (HOODO7.BOWFN)  
CFOOD TRANSITION (HOODO7.CFOOD)  
HARVEY TRANSITION (HOODO7.HRV)  
LEEVILLE TRANSITION (HOODO7.LEV)  
SBIRD TRANSITION (HOODO7.SBIRD)

HOODO SEVEN DEPARTURE (RNAV)  
(HOODO7.HOODO) 07OCT21