

|  |                        |   |
|--|------------------------|---|
| WAAS<br>CH <b>78227</b><br><b>W01A</b> | APP CRS<br><b>007°</b> | Rwy Idg<br>TDZE <b>124</b><br>Apt Elev <b>130</b> |
|--|------------------------|---|

RNAV (GPS) RWY 1

HARRELL FLD (CDH)

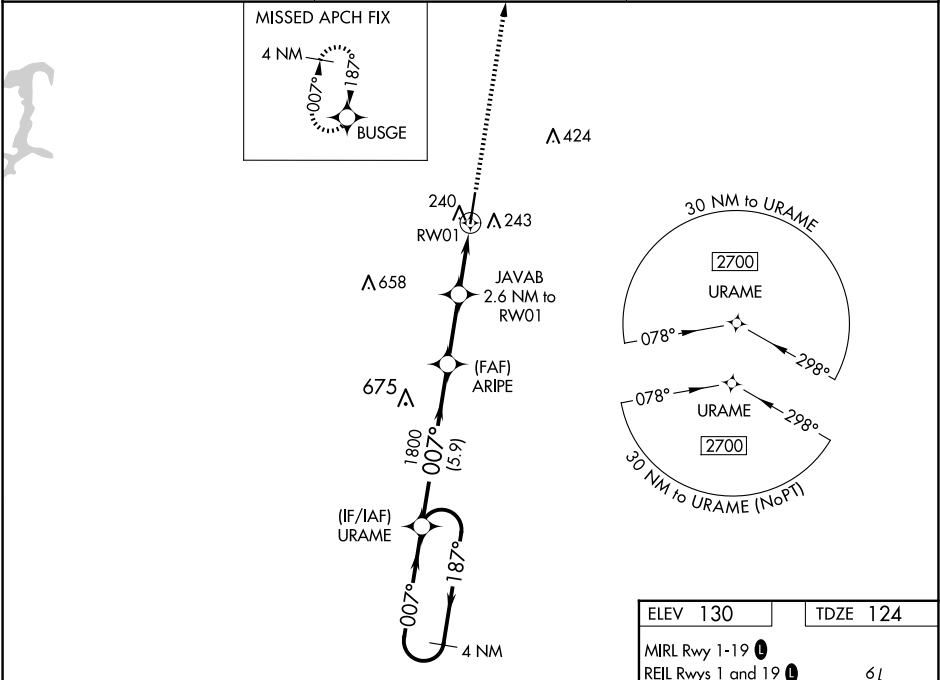
RNP APCH - GPS.

⚠

Baro-VNAV NA when using El Dorado altimeter setting. For uncompensated Baro-VNAV systems, LNAV/VNAV NA below -15°C or above 43°C. Rwy 1 helicopter visibility reduction below ¾ SM NA. When local altimeter setting not received, use El Dorado altimeter setting and increase LPV DA to 507 feet, LNAV/VNAV DA to 499 feet and all MDA 80 feet; increase LPV all Cats visibility ½ SM, LNAV Cats C and D ¾ SM, and Circling Cat D ¼ SM.

MISSED APPROACH:  
Climb to 2700 direct BUSGE and hold.

|                        |   |                                 |
|------------------------|---|---------------------------------|
| AWOS-3<br><b>125.2</b> | FORT WORTH CENTER<br><b>128.2 269.1</b> | UNICOM<br><b>122.7 (CTAF) ①</b> |
|------------------------|---|---------------------------------|



4 NM Holding Pattern

URAM

2700

187°

007°

GP 3.00° TCH 45

1800

007°

ARIPE

1800

JAVAB

2.6 NM to RW01

\*980

RW01

5.9 NM

2.5 NM

2.6 NM

\*LNAV only

2700

BUSGE

| CATEGORY     | A                    | B                    | C                      | D                      |
|--------------|----------------------|----------------------|------------------------|------------------------|
| LPV DA       |                      | 430-1                | 306 (300-1)            |                        |
| LNAV/VNAV DA |                      | 422-1                | 298 (300-1)            |                        |
| LNAV MDA     |                      | 500-1                | 376 (400-1)            |                        |
| CIRCLING     | 560-1<br>430 (500-1) | 580-1<br>450 (500-1) | 580-1½<br>450 (500-1½) | 960-2¾<br>830 (900-2¾) |

