

WAAS CH 45540 W34A	APP CRS 334°	Rwy Idg 4477 TDZE 20 Apt Elev 20
--	------------------------	---

RNAV (GPS) RWY 34
CAMBRIDGE-DORCHESTER RGNL (CGE)

RNP APCH - GPS.



Rwy 34 helicopter visibility reduction below $\frac{3}{4}$ SM NA. For uncompensated Baro-VNAV systems, LNAV/VNAV NA below -15°C or above 54°C . Circling Rwy 16 NA at night.

MISSED APPROACH: Climb to 2000 direct OVAYO and hold.

AWOS-3 120.675	PATUXENT APP CON * 121,0 250,3	UNICOM 122.7 (CTAF)	121.9
--------------------------	--	-------------------------------	--

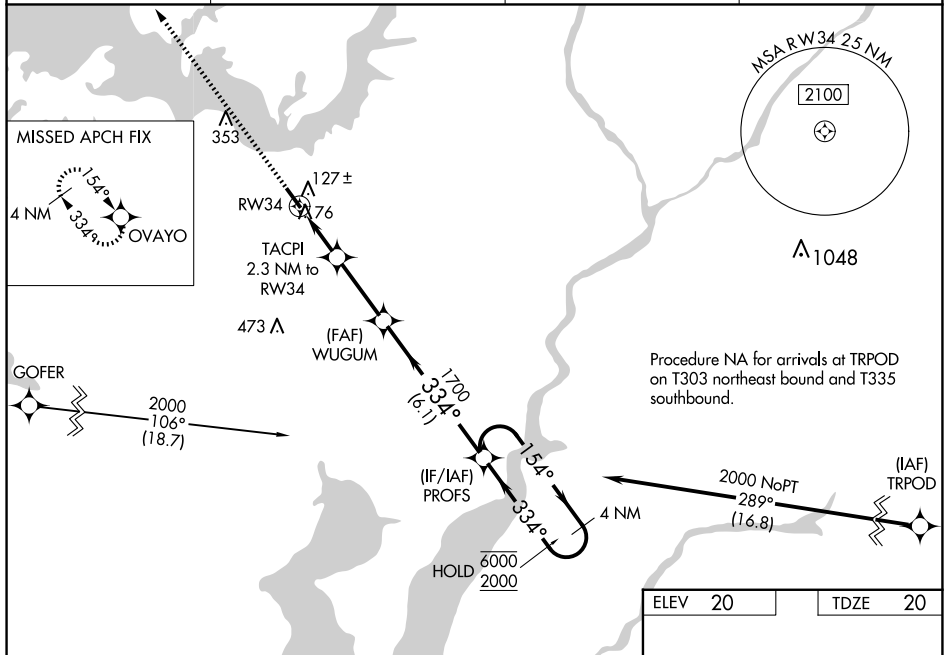


Diagram illustrating the VGS1 and RNAV glidepath for RW34. The glidepath is defined by a 334° angle from 1700 feet to 800 feet, and a 154° angle for the 4 NM Holding Pattern at 6000/2000 feet. Key waypoints include WUGUM, TACPI (2.3 NM to RW34), and PROFS. The diagram also indicates a 4 NM Holding Pattern and a GP 3.00° TCH 57.

CATEGORY		A	B	C	D
LPV	DA	286-7 $\frac{7}{8}$		266 (300-7 $\frac{7}{8}$)	
LNAV/ VNAV	DA	380-1		360 (400-1)	
LNAV	MDA	380-1		360 (400-1)	
C CIRCLING		440-1 420 (500-1)	480-1 460 (500-1)	660-1 $\frac{3}{4}$ 640 (700-1 $\frac{3}{4}$)	780-2 $\frac{1}{2}$ 760 (800-2 $\frac{1}{2}$)

