

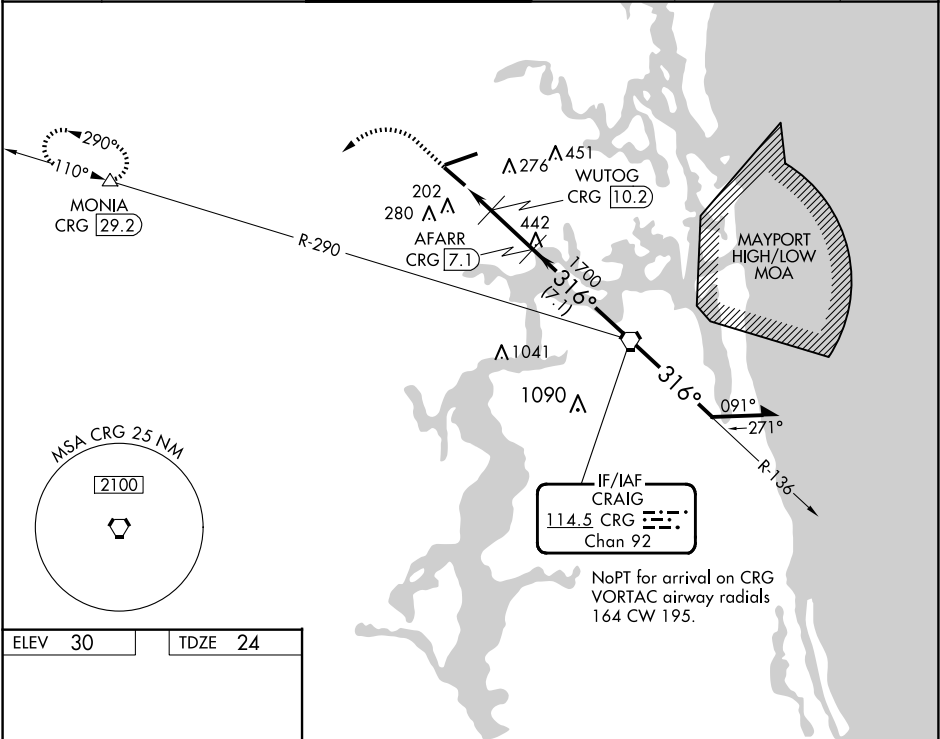
VORTAC CRG	APP CRS	Rwy Idg	7701
114.5	316°	TDZE	24
Chan 92		Apt Elev	30

VOR/DME RWY 32  
JACKSONVILLE INTL (JAX)

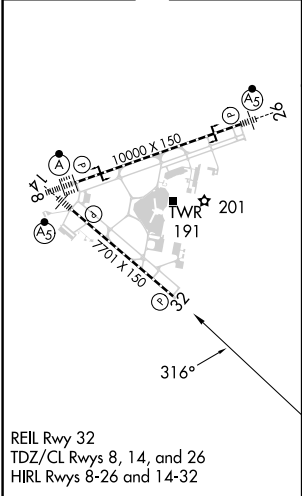
**▼** Rwy 32 helicopter visibility reduction by below ¾ SM NA.  
**▲** Cat E procedure turn NA.

MISSED APPROACH: Climb to 1000 then climbing left turn to 3000 on heading 250° and on CRG VORTAC R-290 to MONIA/CRG 29.2 DME and hold.

D-ATIS	JACKSONVILLE APP CON	JACKSONVILLE TOWER	GND CON	CLNC DEL	CPDLC
125.85	119.0 269.9	118.3 317.7	121.9 348.6	119.5 290.275	



ELEV 30	TDZE 24
---------	---------



1000	3000	CRG R-290	MONIA △	VGSI and ILS glidepath not coincident (VGSI Angle 3.05/TCH 68).
↑	hdg 250°			

SE-3, 07 AUG 2025 to 04 SEP 2025

SE-3, 07 AUG 2025 to 04 SEP 2025