

APP CRS	Rwy Idg	7701
317°	TDZE	24
	Apt Elev	29

RNAV (RNP) Y RWY 32

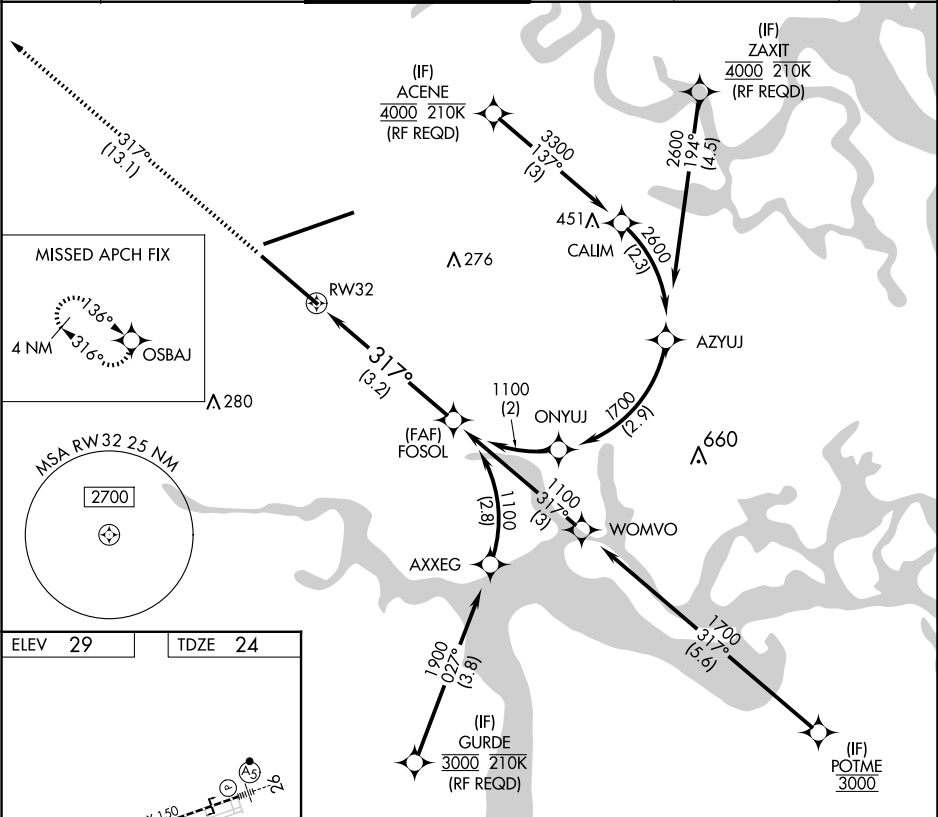
JACKSONVILLE INTL (JAX)

▼

For uncompensated Baro-VNAV systems, procedure NA below -5°C (23°F) or above 54°C (130°F). GPS required.

MISSED APPROACH: Climb to 2000 on track 317° to OSBAJ and hold.

D-ATIS	JACKSONVILLE APP CON	JACKSONVILLE TOWER	GND CON	CLNC DEL	CPDLC
125.85	119.0 269.9	118.3 317.7	121.9 348.6	119.5 290.275	



ELEV 29

TDZE 24

2000

OSBAJ

tr 317°

VGSI and RNAV glidepath not coincident (VGSI Angle 3.00/TCH 67).

FOSOL

1100

1100

GP 3.00° TCH 50

RW32

317°

See planview for multiple IF locations.

3.2 NM

CATEGORY	A	B	C	D
RNP 0.11 DA		359-1½	334 (400-1½)	
RNP 0.30 DA		423-1½	399 (400-1½)	

AUTHORIZATION REQUIRED