

LOC I-PEK  
**110.3**

APP CRS  
**257°**

Rwy ldg **10000**  
TDZE **27**  
Apt Elev **30**

ILS Y or LOC Y RWY 26

JACKSONVILLE INTL (JAX)

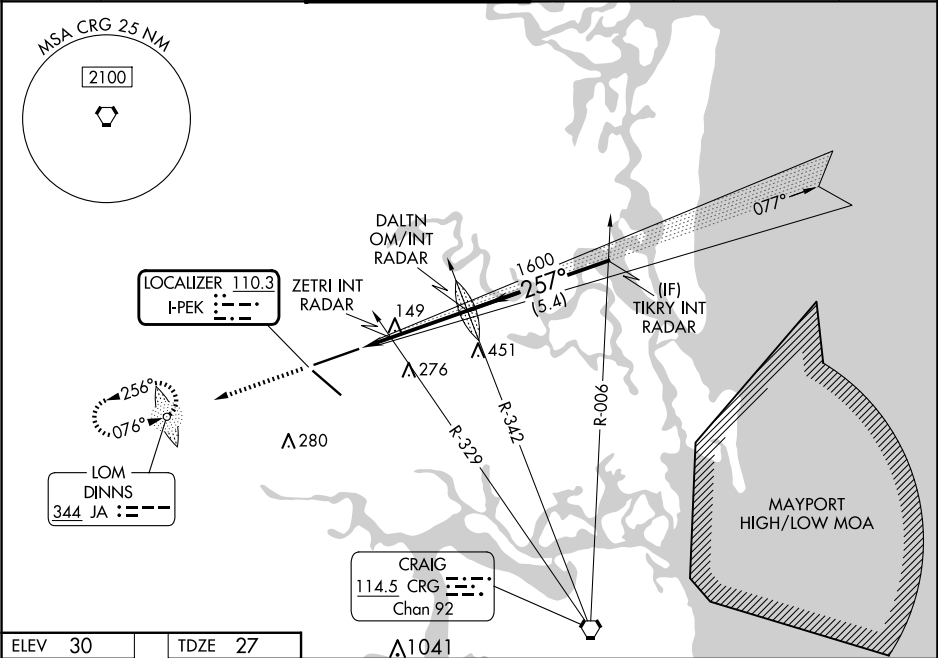
ADF required. RADAR required for procedure entry.

For inop ALS, ZETRI Fix Minimums: increase S-LOC 26 Cats C/D visibility to RVR 5500.

MALSR

MISSED APPROACH: Climb to 3000 direct DINNS LOM and hold, continue climb-in-hold to 3000.

D-ATIS <b>125.85</b>	JACKSONVILLE APP CON <b>119.0 269.9</b>	JACKSONVILLE TOWER <b>118.3 317.7</b>	GND CON <b>121.9 348.6</b>	CLNC DEL <b>119.5 290.275</b>	CPDLC
-------------------------	--	--	-------------------------------	----------------------------------	-------



ELEV 30	TDZE 27
---------	---------

REIL Rwy 32  
TDZ/CL Rwys 8, 14, and 26  
HIRL Rwys 8-26 and 14-32

FAF to MAP 4.2 NM

Knots	60	90	120	150	180
Min:Sec	4:12	2:48	2:06	1:41	1:24

3000 DINNS

VGSI and ILS glidepath not coincident (VGSI Angle 3.00/TCH 70).

DALTN OM/INT RADAR

TIKRY INT RADAR

ZETRI INT RADAR

1402

257°

2000

GS 3.00° TCH 55

1.2 NM

3 NM

5.4 NM

CATEGORY	A	B	C	D
S-ILS 26	227/18 200 (200-½)			
S-LOC 26	480/24	453 (500-½)	480/45	453 (500-¾)
CIRCLING	520-1	490 (500-1)	580-1½ 550 (600-1½)	580-2 550 (600-2)
ZETRI FIX MINIMUMS (DUAL VOR RECEIVERS REQUIRED)				
S-LOC 26	400/24	373 (400-½)	400/35	373 (400-¾)
CIRCLING	520-1	490 (500-1)	580-1½ 550 (600-1½)	580-2 550 (600-2)