

JACKSONVILLE, FLORIDA

HI-ILS Z or LOC Z RWY 8

LOC I-JAX
110.7

APCH CRS
077°

Rwy Idg **10,000**
TDZE **30**
Arpt Elev **30**

[USAF]

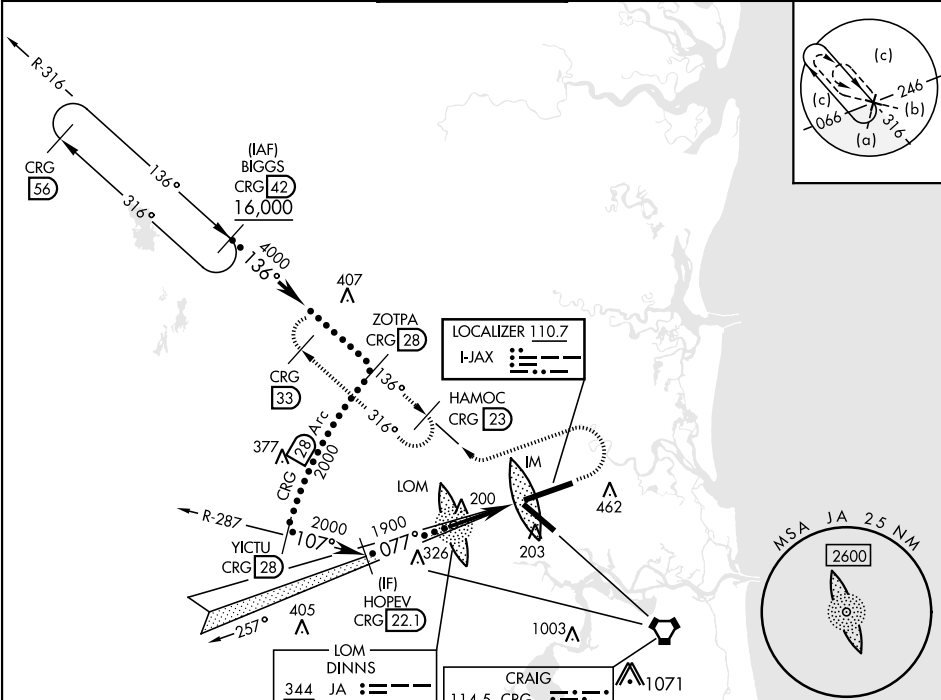
JACKSONVILLE INTL (KJAX)

DME required. RADAR required for procedure entry.

ALSIF-2
A

MISSED APPROACH: Climb to 1000 then climbing left turn to 4000 on heading 250° and on CRG R-316 to HAMOC/CRG 23 DME and hold, continue climb-in-hold to 4000.

ATIS 125.85	APP CON 119.0 269.9	TOWER 118.3 317.7	GND CON 121.9 348.6	CLNC DEL 119.5 290.275
-----------------------	-------------------------------	-----------------------------	-------------------------------	----------------------------------



EMERG SAFE ALT 100 NM 2600

VGSI and ILS glidepath not coincident (VGSI Angle 3.00/TCH 70).

1000

4000

CRG R-316

HAMOC CRG 23

HOPEV 22.1

LOM 1861

IM

GS 3.00° TCH 55

2000

1900

077°

5.5 NM

0.1

REIL Rwy 32

HIRL Rwy 8-26, 14-32

TDZL/CL Rwy 8-26, 14

FAF to MAP 5.6 NM

Knots

120

140

160

180

200

Min:Sec

2:48

2:24

2:06

1:52

1:41

HI-ILS Z or LOC Z RWY 8

SE-3, 07 AUG 2025 to 04 SEP 2025

SE-3, 07 AUG 2025 to 04 SEP 2025