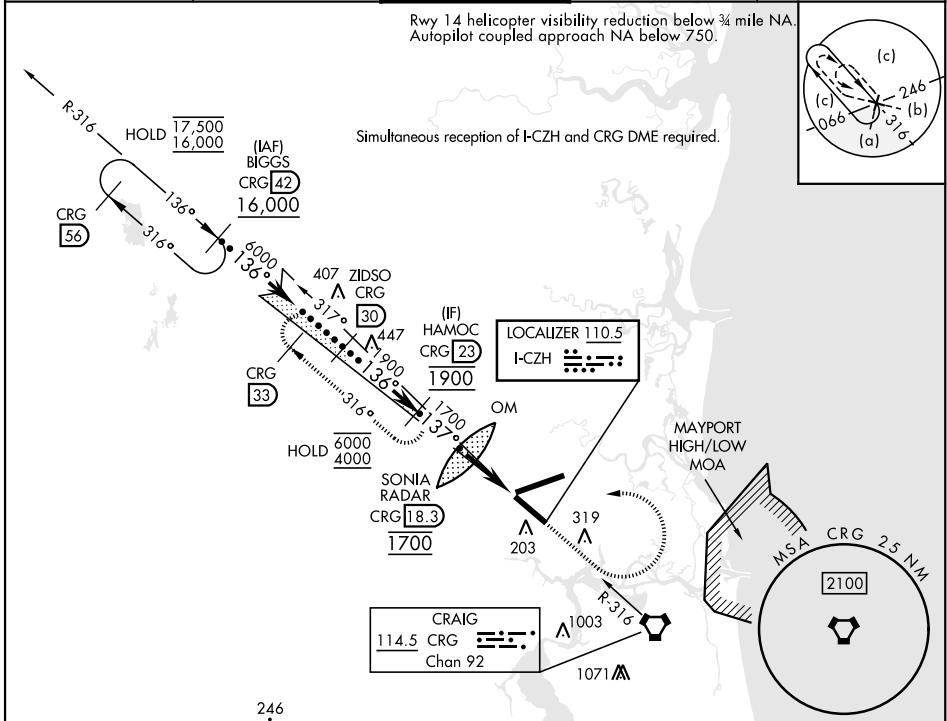


HI-ILS Z or LOC Z RWY 14

| | | | | |
|---|-------------------------------|---|-------------------------------|---|
| LOC I-CZH 110.5 | APCH CRS 137° | Rwy Idg TDZE Arpt Elev 7701 27 30 | [USAF] | JACKSONVILLE INTL (KJAX) |
| DME required. RADAR required for procedure entry. | | | MALSR | MISSED APPROACH: Climb to 2000 then climbing left turn to 4000 on CRG R-316 to HAMOC 23 DME and hold. |
| ★ When ALS inop, increase vis to ¾ mile. ★★ When ALS inop, increase vis to 1 mile. | | | | |
| ATIS 125.85 | APP CON 119.0 269.9 | TOWER 118.3 317.7 | GND CON 121.9 348.6 | CLNC DEL 119.5 290.275 |



| | | | | |
|---|------------------------|----------------------|------------------------|--------------|
| EMERG SAFE ALT 100 NM 2800 FROM CRG VORTAC | | | ELEV 30 | TDZE 27 |
| BIGGS R-316 CRG 42, ZIDSO R-316 CRG 30, HAMOC R-316 CRG 23, SONIA RADAR CRG 18.3, KUYER CRG 14.7, CRG 14.4, CRG 13.5, CRG 18.3 OM/INT, GS 3.00° TCH 54, VGSi and ILS glidepath not coincident (VGSi Angle 3.00/TCH 70). | | | 2000 | 4000 |
| 16,000, 6000, 1900, 1700, 1628, 480, 3.6 NM, 1.2 NM | | | 137° | 10,000 x 150 |
| CATEGORY | C | D | E | |
| S-ILS 14 * | 306-¾ | 279 (300-¾) | | |
| S-LOC 14 ** | 380-¾ | 353 (400-¾) | | |
| CIRCLING | 580-1½ 550 (600-1½) | 580-2 550 (600-2) | 760-2½ 730 (800-2½) | |
| HIRL Rwy 8-26, 14-32 REIL Rwy 32 TDZL/CL Rwy 8, 14, 26 FAF to MAP 4.8 NM | | | | |
| Knots 120 140 160 180 200 Min:Sec 2:24 2:03 1:48 1:36 1:26 | | | | |

HI-ILS Z or LOC Z RWY 14