

WAAS CH 62946 W14A	APP CRS 134°	Rwy Idg 3604 TDZE 1446 Apt Elev 1446
--	------------------------	---

RNAV (GPS) RWY 14
JACKSON MUNI (MJQ)

RNP APCH - GPS.

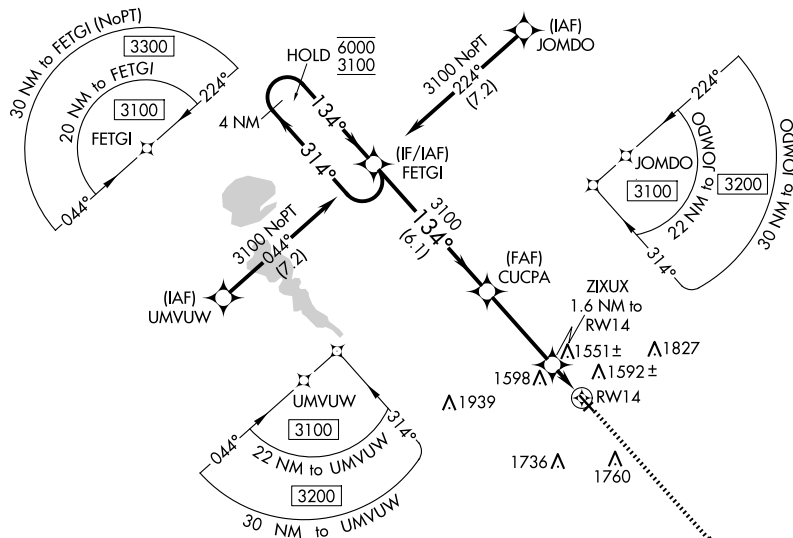
T For uncompensated Baro-VNAV systems, LNAV/VNAV NA below -17°C or above 54°C. Circling NA to Rwy 4 and 22. Rwy 14 helicopter visibility reduction below $\frac{3}{4}$ SM NA.

MISSED APPROACH: Climb to 3100 direct MCQIN and hold.

AWOS-3
118.1

MINNEAPOLIS CENTER
127.75 257.7

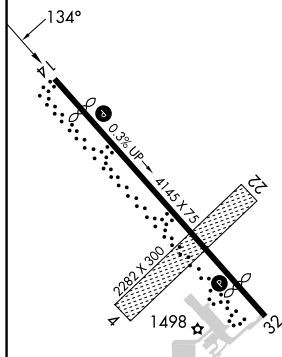
GCO
121.725

UNICOM
122.8 (CTAF) **L**

A 2041

ELEV 1446

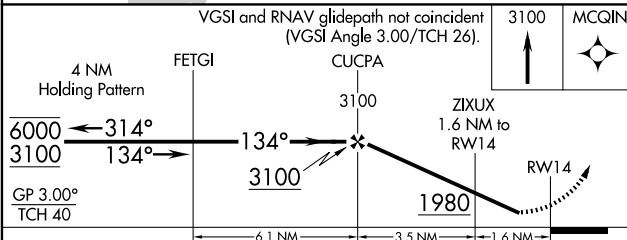
TDZE 1446




REIL Rwy 14 and 32 L

MIRL Rwy 14-32 **L**

VGSI and RNAV glidepath not coincident
(VGSI Angle 3.00/TCH 26).



CATEGORY		A	B	C	D
LPV	DA	1696-1	250 (300-1)	NA	
LNAV/ VNAV	DA	1838-1 $\frac{1}{8}$	392 (400-1 $\frac{1}{8}$)	NA	
LNAV	MDA	1820-1	374 (400-1)	NA	
 CIRCLING		2040-1	594 (600-1)	NA	

RNAV (GPS) RWY 14