

BOWIE, TEXAS

AL-5567 (FAA)

23166

WAAS CH <b>58341</b> <b>W35A</b>	APP CRS <b>350°</b>	Rwy Idg TDZE <b>1098</b> Apt Elev <b>1101</b>
--	------------------------	---

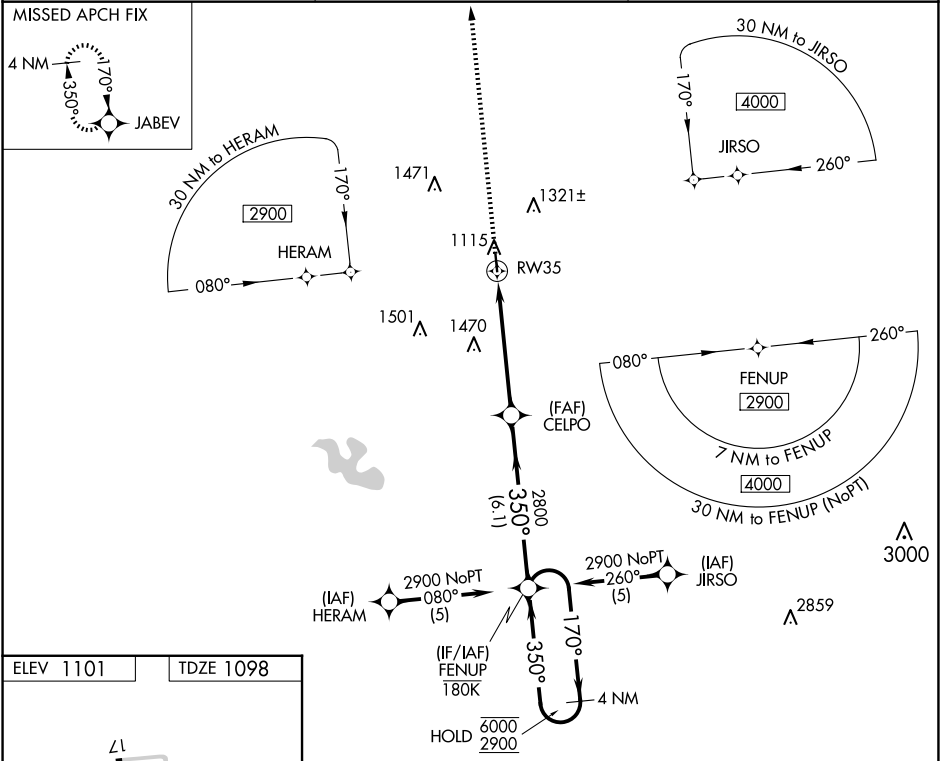
**RNAV (GPS) RWY 35**  
BOWIE MUNI (ØF2)

RNP APCH.

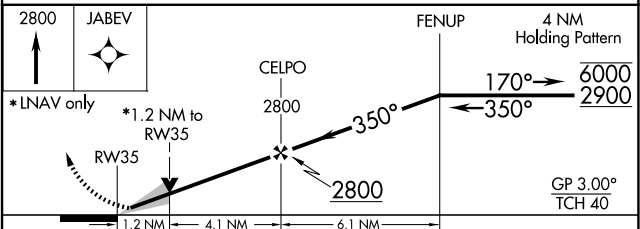
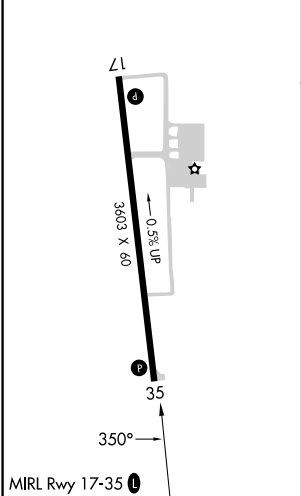
For uncompensated Baro-VNAV systems, LNAV/VNAV NA below -17°C or above 54°C.

MISSED APPROACH: Climb to 2800 direct JABEV and hold.

AWOS-3PT <b>118.75</b>	FORT WORTH CENTER <b>127.95 322.325</b>	UNICOM <b>122.8 (CTAF) Ø</b>
---------------------------	--	---------------------------------



ELEV 1101	TDZE 1098
-----------	-----------



CATEGORY	A	B	C	D
LPV DA	1348-1	250 (300-1)		NA
LNAV/VNAV DA	1394-1	296 (300-1)		NA
LNAV MDA	1520-1	422 (500-1)	1520-1¼ 422 (500-1¼)	NA
CIRCLING	1560-1 459 (500-1)	1680-1 579 (600-1)	1860-2¼ 759 (800-2¼)	NA

BOWIE, TEXAS  
Amdt 2 19JUL18

33°36'N-97°47'W

BOWIE MUNI (ØF2)  
**RNAV (GPS) RWY 35**

SC-2, 07 AUG 2025 to 04 SEP 2025

SC-2, 07 AUG 2025 to 04 SEP 2025