

WAAS CH <b>58307</b> <b>W16A</b>	APP CRS <b>161°</b>	Rwy ldg <b>4002</b> TDZE <b>168</b> Apt Elev <b>168</b>
--	------------------------	---

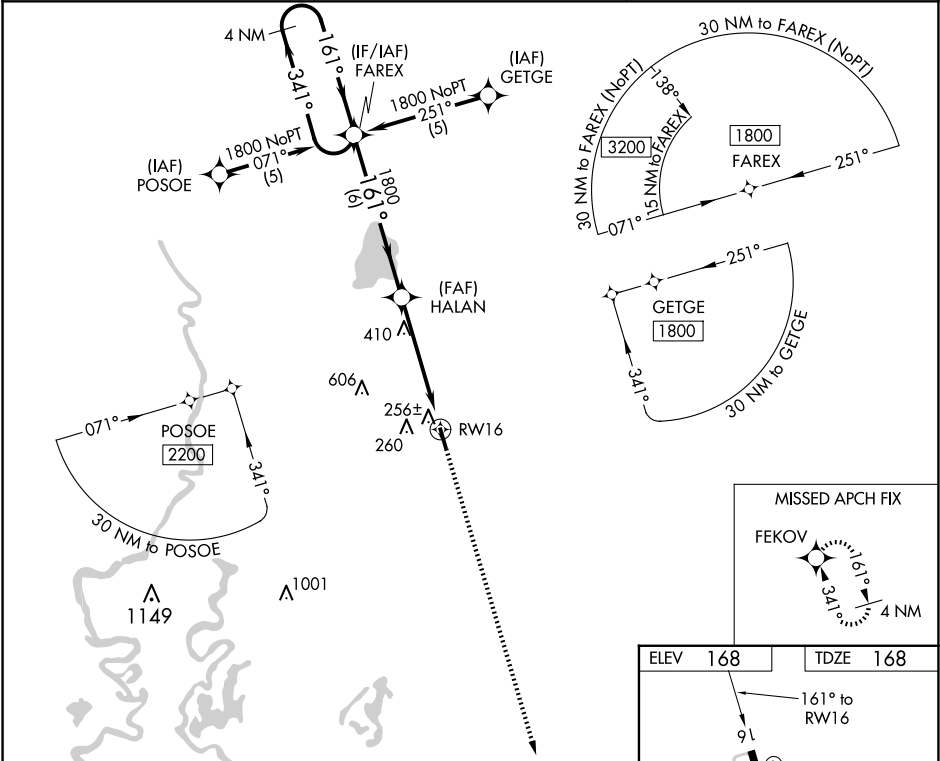
RNAV (GPS) RWY 16

MOREHOUSE MEML (BQP)

**⚠** For uncompensated Baro-VNAV systems, LNAV/VNAV NA below -15°C (5°F) or above 54°C (130°F). DME/DME RNP-0.3 NA. Visibility reduction by helicopters NA. When local altimeter setting not received, use Monroe altimeter setting and increase LPV DA to 550, LNAV/VNAV DA to 577 and all MDA 60 feet; increase LNAV Cat C visibility ¼ SM and Circling Cat C visibility ¼ SM. Baro-VNAV NA when using Monroe altimeter setting. VDP NA when using Monroe altimeter setting.

MISSED APPROACH:  
Climb to 1800 direct  
FEKOV and hold.

AWOS-3PT <b>118.375</b>	MONROE APP CON ★ <b>126.9 307.9</b>	UNICOM <b>122.8 (CTAF) 0</b>
----------------------------	--	---------------------------------



4 NM Holding Pattern		FAREX	HALAN	1800	FEKOV
1800 ← 341°		161° →	1800	*1.6 NM to RW16	*LNAV only.
GP 3.00° TCH 50		6 NM	3.3 NM	1.6 NM	
CATEGORY	A	B	C	D	
LPV DA	499-1¼	331 (400-1¼)		NA	
LNAV/VNAV DA	526-1¼	358 (400-1¼)		NA	
LNAV MDA	720-1	552 (600-1)	720-1⅝ 552 (600-1⅝)	NA	
CIRCLING	720-1 552 (600-1)	780-1 612 (700-1)	820-1¾ 652 (700-1¾)	NA	

