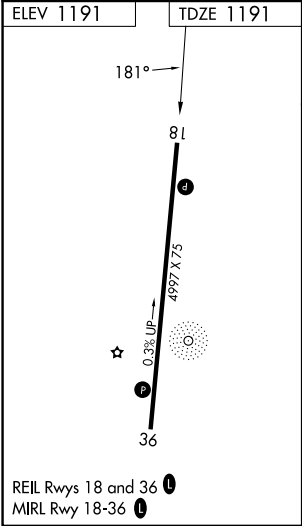
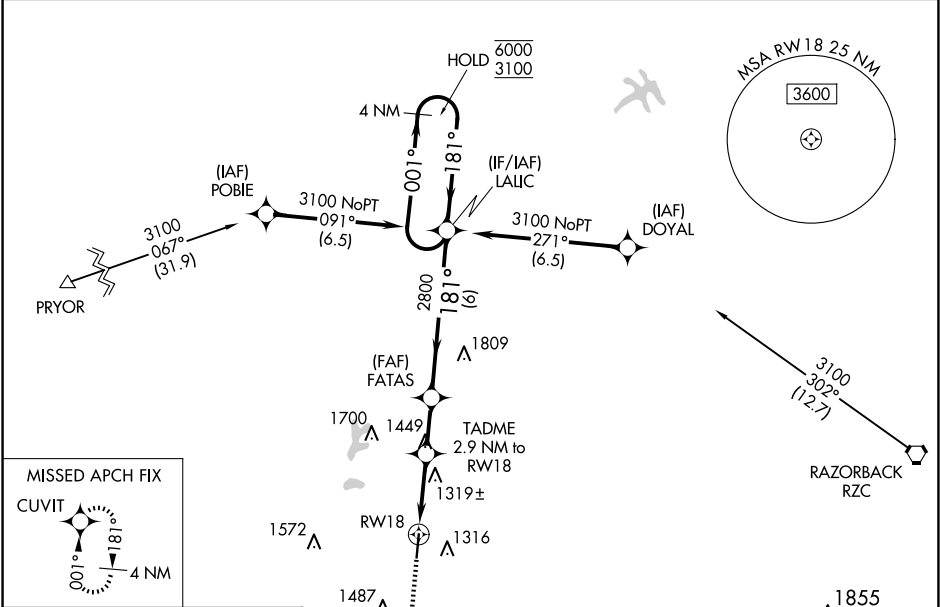


WAAS CH 90208 W18A	APP CRS 181°	Rwy Ldg 4997 TDZE 1191 Apt Elev 1191
--	------------------------	---

RNAV (GPS) RWY 18
SMITH FLD (SLG)

RNP APCH-GPS.		MISSED APPROACH: Climb to 3200 direct CUVIT and hold.
	Rwy 18 helicopter visibility reduction below 3/4 SM NA. For uncompensated Baro-VNAV systems, LNAV/VNAV NA below -17°C or above 54°C.	

AWOS-3PT 118.375	RAZORBACK APP CON ★ 121.0 244.575	UNICOM 122.8 (CTAF) 0
----------------------------	---	---------------------------------



3200

CUVIT

3200

4 NM Holding Pattern

001°

181°

6000

3100

1.1 NM to RW18

2.9 NM to RW18

FATAS 2800

TADME

181°

2800

2140

LAJIC

GP 3.00°

TCH 44

1.1 NM

1.8 NM

2 NM

6 NM

CATEGORY	A		B		C		D	
LPV DA			1513-1		322 (400-1)			
LNAV/VNAV DA			1598-1½		407 (500-1½)			
LNAV MDA	1580-1		389 (400-1)		1580-1½		389 (400-1½)	
CIRCLING	1620-1 429 (500-1)		1720-1 529 (600-1)		1800-1¾ 609 (700-1¾)		1880-2¼ 689 (700-2¼)	