

WAAS CH <b>53701</b> <b>W06A</b>	APP CRS <b>059°</b>	Rwy Ldg <b>5500</b> TDZE <b>547</b> Apt Elev <b>547</b>
--	------------------------	---

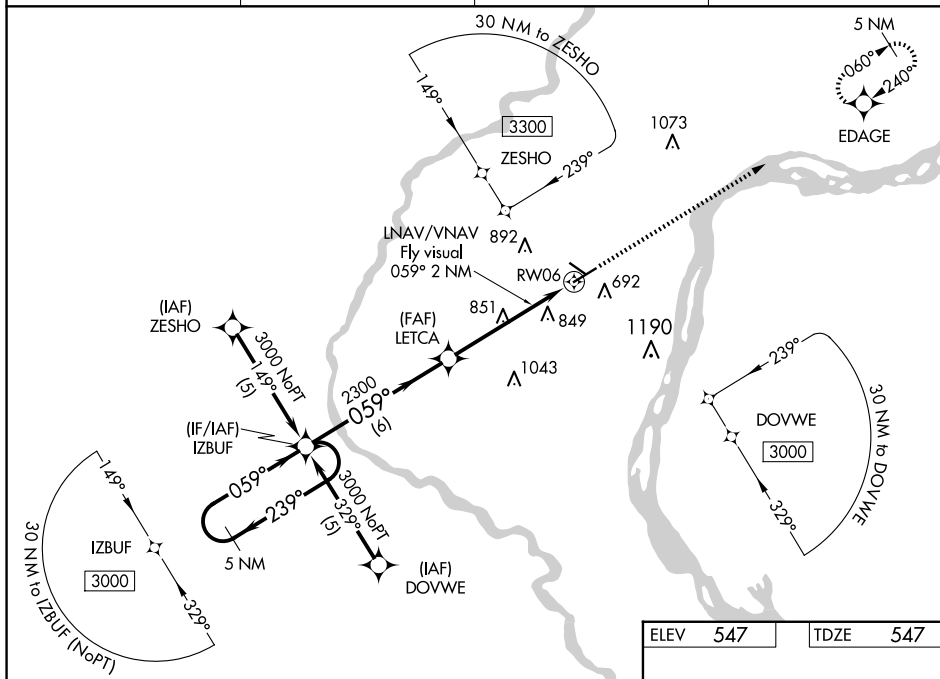
RNAV (GPS) RWY 6  
MUSCATINE MUNI (MUT)

RNP APCH - GPS.

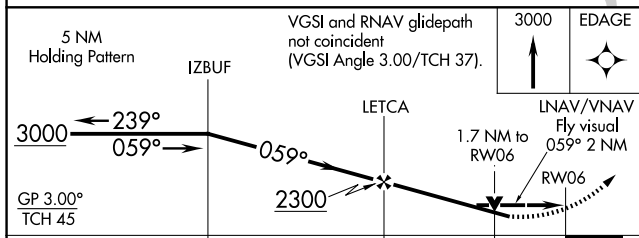
**T** Rwy 6 helicopter visibility reduction below  $\frac{3}{4}$  SM NA. For uncompensated Baro-VNAV systems, LNAV/VNAV NA below  $-16^{\circ}\text{C}$  or above  $54^{\circ}\text{C}$ . If local altimeter setting not received, use Iowa City Muni altimeter setting and increase all DAs/MDAs 80 feet. Baro-VNAV and VDP NA when using lowa City Muni altimeter setting.

**MISSED APPROACH:** Climb to 3000 direct EDAGE and hold.

AWOS-3P <b>120.625</b>	QUAD CITY APP CON ★ <b>133.275 257.8</b>	CLNC DEL <b>119.125</b>	UNICOM <b>122.7 (CTAF) 0</b>
---------------------------	---	----------------------------	---------------------------------



ELEV	547	TDZE	547
------	-----	------	-----



CATEGORY	A	B	C	D
LPV DA	1076-2 529 (600-2)			
LNAV/VNAV DA	1232-2 685 (700-2)			1232-2¼ 685 (700-2¼)
LNAV MDA	1120-1 573 (600-1)		1120-1½ 573 (600-1½)	1120-1¾ 573 (600-1¾)
CIRCLING	1120-2½ 573 (600-2½)	1200-2½ 653 (700-2½)		1500-3 953 (1000-3)

MUSCATINE, IOWA

Orig-B 12JUN25

41°22'N-91°09'W

MUSCATINE MUNI (MUT)  
RNAV (GPS) RWY 6

NC-3, 07 AUG 2025 to 04 SEP 2025