

WAAS CH 42636 W30A	APP CRS 306°	Rwy Idg 4000 TDZE 543 Apt Elev 547
--	------------------------	---

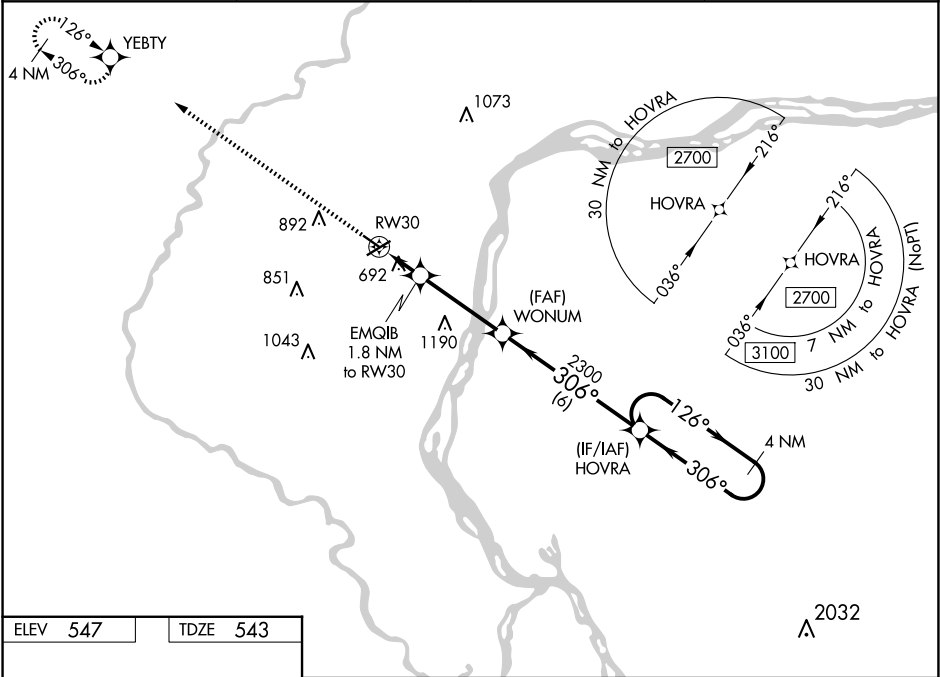
RNAV (GPS) RWY 30

MUSCATINE MUNI (MUT)

DME/DME RNP-0.3 NA. Helicopter visibility reduction below 1 SM NA. VDP and Baro-VNAV NA with Iowa City altimeter setting. When local altimeter setting not received, use Iowa City altimeter setting and increase all DA 76 feet and all MDA 80 feet, increase LNAV/VNAV all Cats visibility ¼ mile. For uncompensated Baro-VNAV systems, LNAV/VNAV NA below -16°C (4°F) or above 54°C (130°F).

MISSED APPROACH: Climb to 2600 direct YEBTY and hold.

AWOS-3P 120.625	QUAD CITY APP CON * 133.275 257.8	CLNC DEL 119.125	UNICOM 122.7 (CTAF) 0
---------------------------	---	----------------------------	---------------------------------



ELEV 547

TDZE 543

REIL Rwy 6, 12, and 30 **0**
MIRL Rwy 6-24 and 12-30 **0**

2600 YEBTY		EMQIB 1.8 NM to RW30		WONUM 2300		HOVRA 4 NM Holding Pattern	
* LNAV only		* 1.2 NM to RW30		1140*		2300	
1.2 NM		0.6		3.6 NM		6 NM	
CATEGORY		A		B		C	D
LPV DA		743-1		200 (200-1)		NA	
LNAV/VNAV DA		989-1½		446 (500-1½)		NA	
LNAV MDA		960-1		417 (500-1)		NA	
CIRCLING		1000-1 453 (500-1)		1200-1 653 (700-1)		NA	