

| | | | |
|--|------------------------|-----------------------------|---|
| WAAS CH 99701 W24A | APP CRS 240° | Rwy Idg TDZE Apt Elev | 5500 545 547 |
|--|------------------------|-----------------------------|---|

RNAV (GPS) RWY 24
MUSCATINE MUNI (MUT)

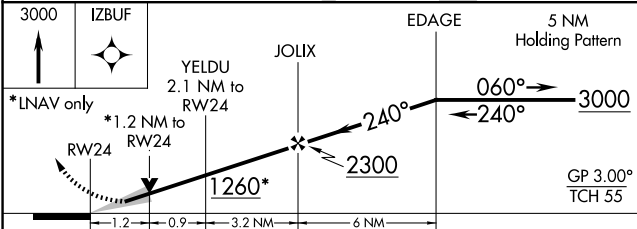
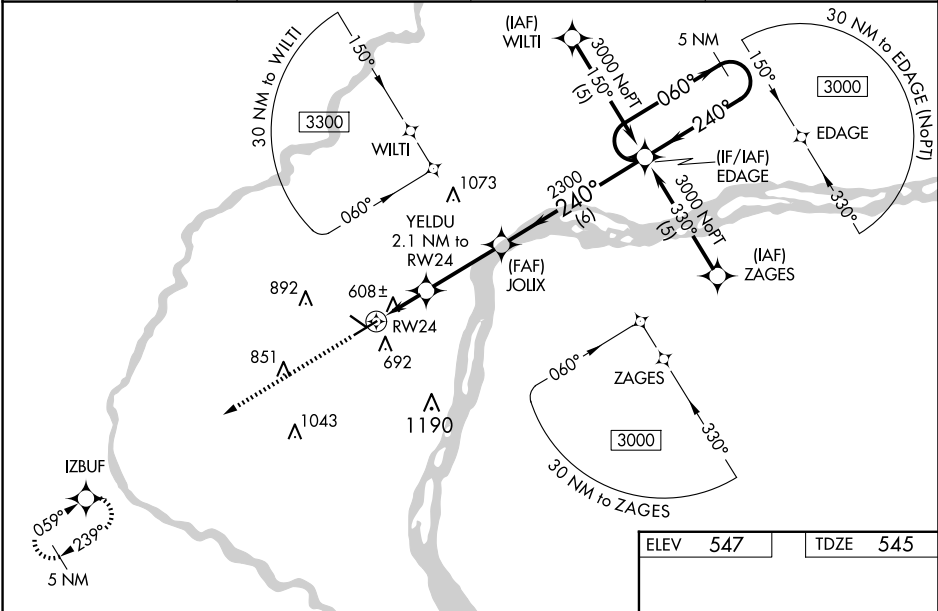
RNP APCH

▼ For uncompensated Baro-VNAV systems, LNAV/VNAV NA below -16°C (4°F) or above 48°C (118°F). For inop ALS, increase LPV all visibilities to 1 SM, increase LNAV/VNAV all Cats and LNAV Cats C visibility to 1½ SM, and increase LNAV Cat D visibility to 1¼ SM. When local altimeter setting not received, use Iowa City altimeter setting and increase LPV DA to 992 and all visibilities ½ SM; increase LNAV/VNAV DA to 1030 feet and all visibilities ¼ SM; increase all MDA 80 feet and LNAV Cats C and D visibility ¼ SM and Circling Cat C visibility ¼ SM. For inop ALS when using Iowa City altimeter setting, increase LPV all visibilities to 1 SM, LNAV/VNAV all visibilities to 1¾ SM, LNAV Cats A and B visibility to 1 SM, and LNAV Cats C and D visibility to 1¾ SM. Baro-VNAV and VDP NA when using Iowa City altimeter setting.

MALSR

MISSED APPROACH:
Climb to 3000 direct
IZBUF and hold.

| | | | |
|---------------------------|---|----------------------------|---------------------------------|
| AWOS-3P 120.625 | QUAD CITY APP CON * 133.275 257.8 | CLNC DEL 119.125 | UNICOM 122.7 (CTAF) 0 |
|---------------------------|---|----------------------------|---------------------------------|



| CATEGORY | A | B | C | D |
|--------------|-------------------------|-------------------------|-------------------------|------------------------|
| LPV DA | 812-½ | 267 (300-½) | | |
| LNAV/VNAV DA | 950-¾ | 405 (500-¾) | | |
| LNAV MDA | 960-½ | 415 (500-½) | 960-¾ 415 (500-¾) | 960-1 415 (500-1) |
| CIRCLING | 1080-1¼ 533 (600-1¼) | 1200-1¼ 653 (700-1¼) | 1200-1¾ 653 (700-1¾) | 1500-3 953 (1000-3) |

ELEV 547 TDZE 545

REIL Rwy 6, 12, and 30 0
MIRL Rwy 6-24 and 12-30 0