


LOC/DME I-LUC 109.15 Chan 28(Y)	APP CRS 240°	Rwy Idg TDZE Apt Elev	5500 545 547
---	------------------------	-----------------------------	---

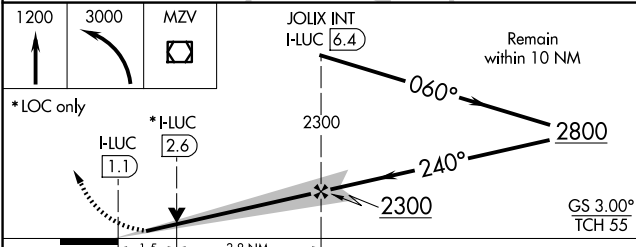
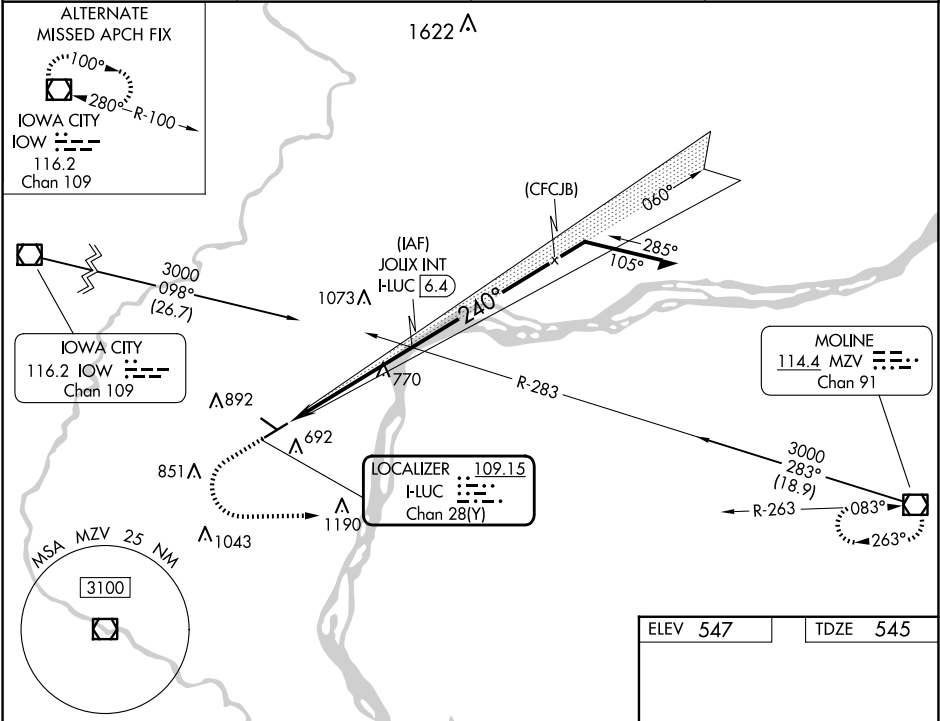
ILS or LOC RWY 24
MUSCATINE MUNI (MUT)


V VDP NA with Iowa City altimeter setting. When local altimeter setting not received, use Iowa City altimeter setting; increase DA to 825 feet; increase all MDA 80 feet and S-LOC 24 Cat C/D visibility $\frac{3}{8}$ SM and Circling Cat C visibility $\frac{1}{4}$ SM. For inop ALS when using Iowa City altimeter setting, increase S-ILS 24 visibility to 1 SM all Cats, and S-LOC 24 Cat C/D visibility to $1\frac{3}{4}$ SM.

MALSR


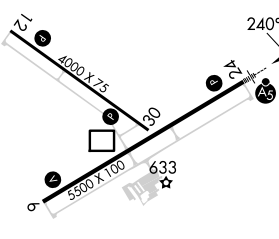
MISSED APPROACH: Climb to 1200 then climbing left turn to 3000 direct MZV VOR/DME and hold.

AWOS-3P 120.625	QUAD CITY APP CON* 133.275 257.8	CLNC DEL 119.125	UNICOM 122.7 (CTAF) 0
---------------------------	--	----------------------------	---------------------------------



CATEGORY	A	B	C	D
S-ILS 24	745- $\frac{1}{2}$ 200 (200- $\frac{1}{2}$)			
S-LOC 24	1080- $\frac{1}{2}$ 535 (600- $\frac{1}{2}$)	1080-1 535 (600-1)		
 CIRCLING	1080-1 533 (600-1)	1200-1 653 (700-1)	1200-1 $\frac{3}{4}$ 653 (700-1 $\frac{3}{4}$)	1500-3 953 (1000-3)

ELEV 547 TDZE 545



REIL Rwy 6, 12, and 30 **0**

MIRL Rwy 6-24 and 12-30 **0**

FAT to MAP 5.3 NM

Knots	60	90	120	150	180
Min:Sec	5:18	3:32	2:39	2:07	1:46

NC-3, 07 AUG 2025 to 04 SEP 2025

NC-3, 07 AUG 2025 to 04 SEP 2025