

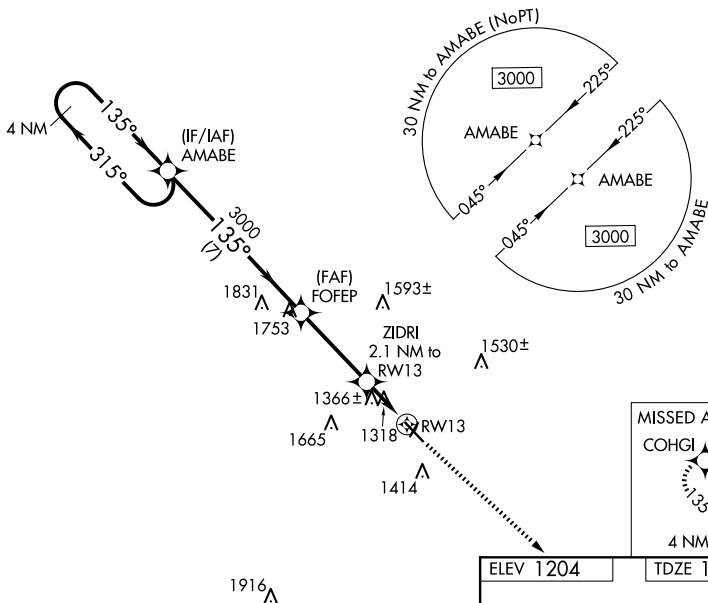
WAAS CH 87030 W13A	APP CRS 135°	Rwy Idg 5000 TDZE 1203 Apt Elev 1204
--	------------------------	---

RNAV (GPS) RWY 13
ARTHUR N NEU (CIN)

▼ For uncompensated Baro-VNAV systems, LNAV/VNAV NA below -17°C (2°F) or above 54°C (130°F). DME/DME RNP-0.3 NA. Baro-VNAV and VDP NA when using Audubon altimeter setting. When local altimeter setting not received, use Audubon altimeter setting: increase LPV DA to 1515 feet; increase LNAV/VNAV DA to 1669 feet and all visibilities ¼ SM; increase all MDAs 80 feet and visibility Cat C ¼ SM.

MISSED APPROACH: Climb to 3000
direct COHGI and hold.

AWOS-3 118.025	MINNEAPOLIS CENTER 134.0 288.3	UNICOM 122.8 (CTAF) 0
--------------------------	--	---------------------------------



MISSED APCH FIX
COHGI
315°
135°
4 NM

VGSi and RNAV glidepath not coincident
(VGSi Angle 3.00/TCH 26).

4 NM Holding Pattern

AMABE

FOFEP

ZIDRI

2.1 NM to RW13

*1.2 NM to RW13

*1900

RW13

GP 3.00° TCH 40

7 NM

3.4 NM

0.9

1.2 NM

3000

315°

135°

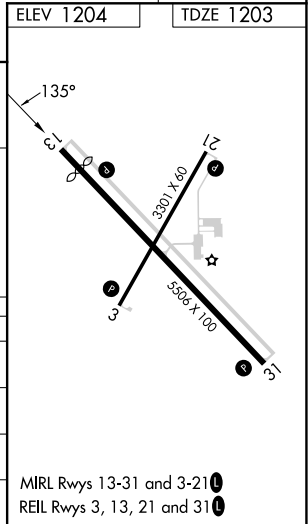
135°

3000

*LNAV only.

↑ VGSi

★ COHGI



NC-3, 07 AUG 2025 to 04 SEP 2025