

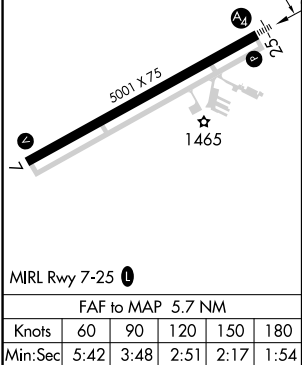
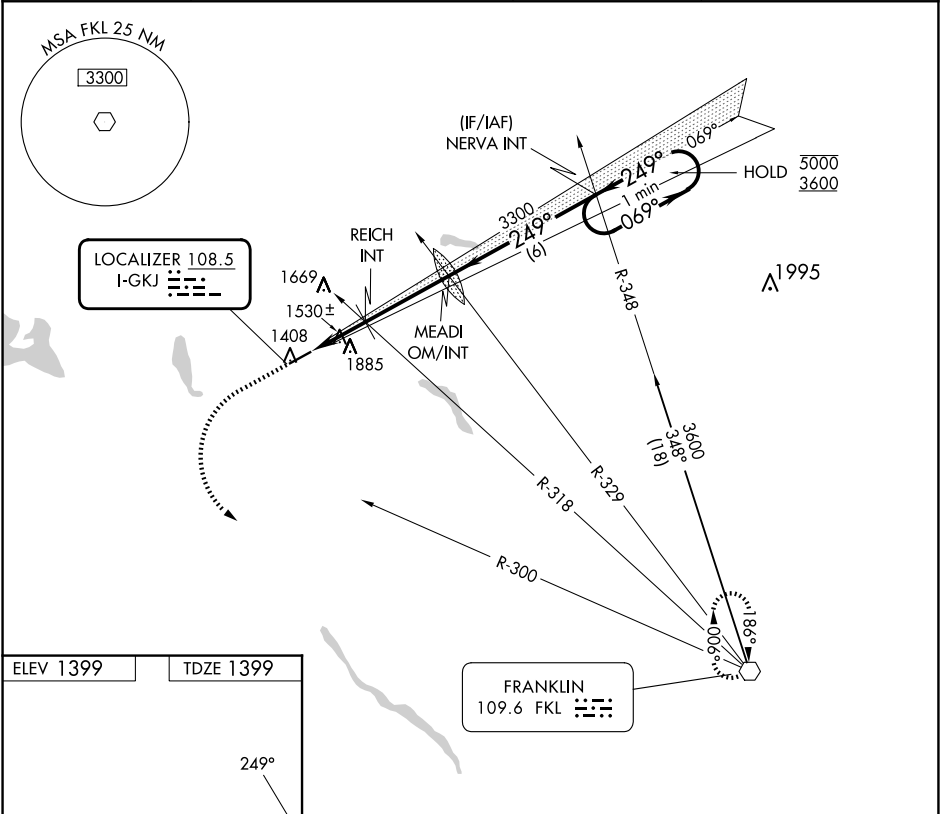
LOC I-GKJ 108.5	APP CRS 249°	Rwy Ldg TDZE Apt Elev	5001 1399 1399
---------------------------	------------------------	-----------------------------	-------------------------------------------

LOC RWY 25

PORT MEADVILLE (GKJ)

RADAR required.	MALS	MISSED APPROACH: Climb to 2000 then climbing left turn to 3600 on heading 125° and FKL VOR R-300 to FKL VOR and hold.
<div><div>▼</div>Inop table does not apply.</div> <div><div>▲</div>Rwy 25 helicopter visibility reduction below ¾ SM NA.</div>	<div><div>AL</div><div><div><div></div><div></div><div></div></div></div></div>	

ASOS 126.375	YOUNGSTOWN APP CON ★ 133.95 322.3	CLNC DEL 124.95	UNICOM 123.0 (CTAF) 0
------------------------	---------------------------------------------	---------------------------	---------------------------------



ELEV 1399	TDZE 1399								
		2000	3600	FKL R-300	FKL	MEADI OM/INT	NERVA INT	One Minute Holding Pattern	
		hdg 125°							
				REICH INT	TCH 41	249°	069°	5000	3600
				2140	3300				
				2.4 NM	3.3 NM	6 NM			
CATEGORY	A	B	C	D					
S-LOC 25	1780-1	381 (400-1)	1780-1 7/8	381 (400-1 7/8)					
CIRCLING	1900-1	2240-1 1/4	2240-2 1/2	2240-2 3/4					
	501 (600-1)	841 (900-1 1/4)	841 (900-2 1/2)	841 (900-2 3/4)					

NE-4, 07 AUG 2025 to 04 SEP 2025

NE-4, 07 AUG 2025 to 04 SEP 2025