

WAAS CH <b>82134</b> <b>W26A</b>	APP CRS <b>258°</b>	Rwy Idg TDZE <b>209</b> Apt Elev <b>239</b>	<b>5000</b>
--	------------------------	---	-------------

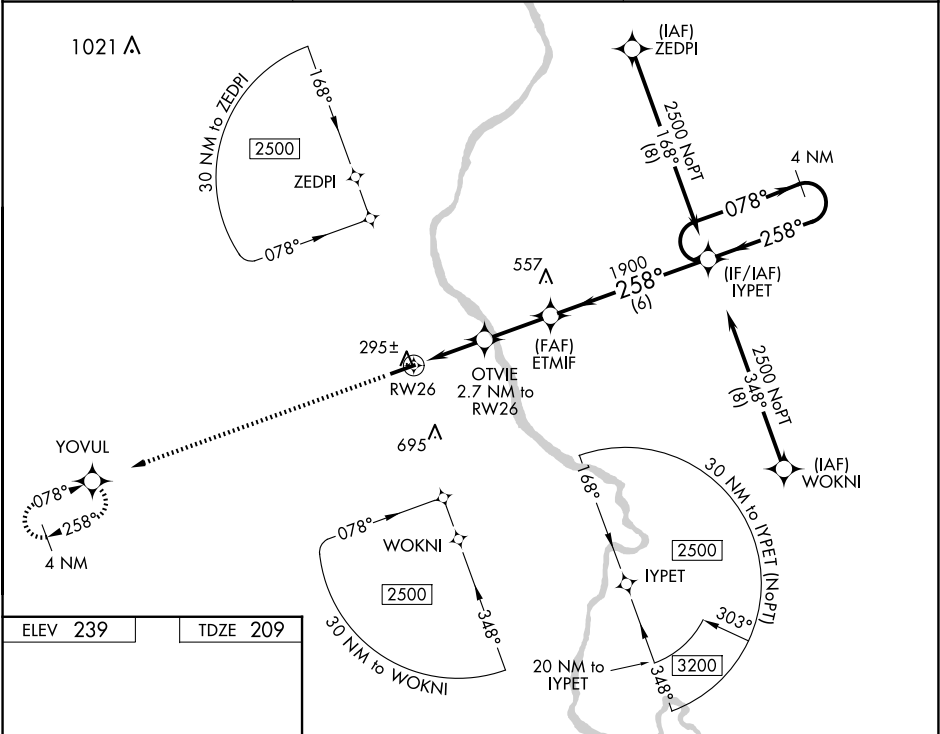
RNAV (GPS) RWY 26

CHERAW MUNI/LYNCH BELLINGER FLD (CQW)

**⚠** DME/DME RNP-0.3 NA. When local altimeter setting not received, use Darlington altimeter setting and increase all DA 44 feet, all MDA 60 feet, LNAV/VNAV all Cals visibility 1/8 mile, LNAV Cat C/D and Circling Cat C/D visibility 1/4 mile. Helicopter visibility reduction below 1 SM NA. For uncompensated Baro-VNAV systems, LNAV/VNAV NA below -15°C (5°F) or above 54°C (130°F). Procedure NA at night.

**MISSED APPROACH:**  
Climb to 2500 direct YOVL and hold.

AWOS-3 <b>124.825</b>	FLORENCE APP CON ★ <b>118.6 341.7</b>	UNICOM <b>122.8 (CTAF) ①</b>
--------------------------	--	---------------------------------



ELEV 239

TDZE 209

258° to RW26

5000 X 75

1.0% UP

289

2500

YOVL

VGSI and RNAV glidepath not coincident.

4 NM Holding Pattern

078°

258°

2500

GP 3.00° TCH 53

ETMIF

1900

258°

1900

\*1100

OTVIE

2.7 NM to RW26

RW26

\*LNAV only.

2.7 NM

2.5 NM

6 NM

CATEGORY	A	B	C	D
LPV DA	459-1		250 (300-1)	
LNAV/VNAV DA	578-1¼		369 (400-1¼)	
LNAV MDA	560-1		351 (400-1)	
CIRCLING	700-1 461 (500-1)		1060-2½ 821 (900-2½)	1060-2¾ 821 (900-2¾)

REIL Rwy 8 and 26 ①

MIRL Rwy 8-26 ①