

LAKEVIEW, OREGON

AL-5552 (FAA)

25163

WAAS CH <b>93532</b> <b>W17A</b>	APP CRS <b>166°</b>	Rwy Ldg <b>5318</b> TDZE <b>4734</b> Apt Elev <b>4734</b>
--	------------------------	---

RNAV (GPS) RWY 17  
LAKE COUNTY (LKV)

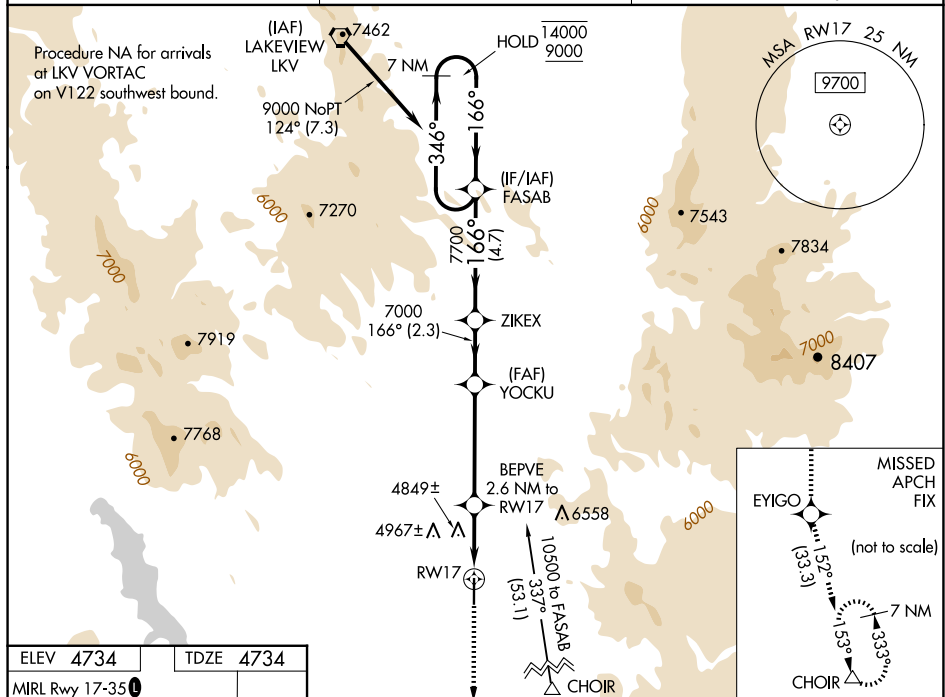
RNP APCH.



Circling NA east of Rwy 17-35. For uncompensated Baro-VNAV systems, LNAV/VNAV NA below -24°C or above 50°C.

MISSED APPROACH: Climb to 11000  
direct EYIGO and on track 152° to  
CHOIR and hold.

AWOS-3PT <b>135.525</b>	SEATTLE CENTER <b>127.6 346.35</b>	UNICOM <b>122.8 (CTAF) 0</b>
----------------------------	---------------------------------------	---------------------------------



11000 ↑	EYIGO ✦	tr 152°	CHOIR △	FASAB 7 NM Holding Pattern			
*INAV only. BEPVE 2.6 NM to RW17 *1 NM to RW17 RW17 5620* 7000 7700 7000 166° 346° → 14000 ← 166° 9000 GP 3.00° TCH 45				YOCKU 7000 ZIKEX 166° 7700 7000			
1 NM 1.6 NM 4.3 NM 2.3 NM 4.7 NM							
CATEGORY	A		B		C		D
LPV DA	4984-1		250 (300-1)				
INAV/ VNAV	5139-1½		405 (500-1½)				
INAV MDA	5100-1		366 (400-1)				
<b>C</b> CIRCLING	5160-1 426 (500-1)	5220-1 486 (500-1)	5460-2 726 (800-2)	5500-2½ 766 (800-2½)			

LAKEVIEW, OREGON

Amdt 1 28FEB19

42°10'N-120°24'W

LAKE COUNTY (LKV)

RNAV (GPS) RWY 17

NW-1, 07 AUG 2025 to 04 SEP 2025

NW-1, 07 AUG 2025 to 04 SEP 2025