
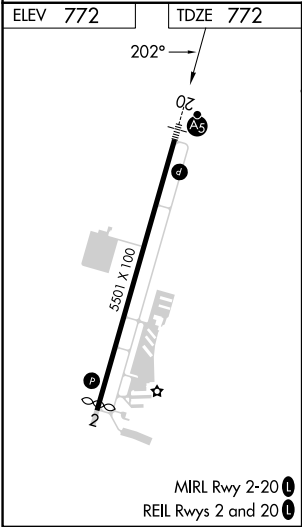
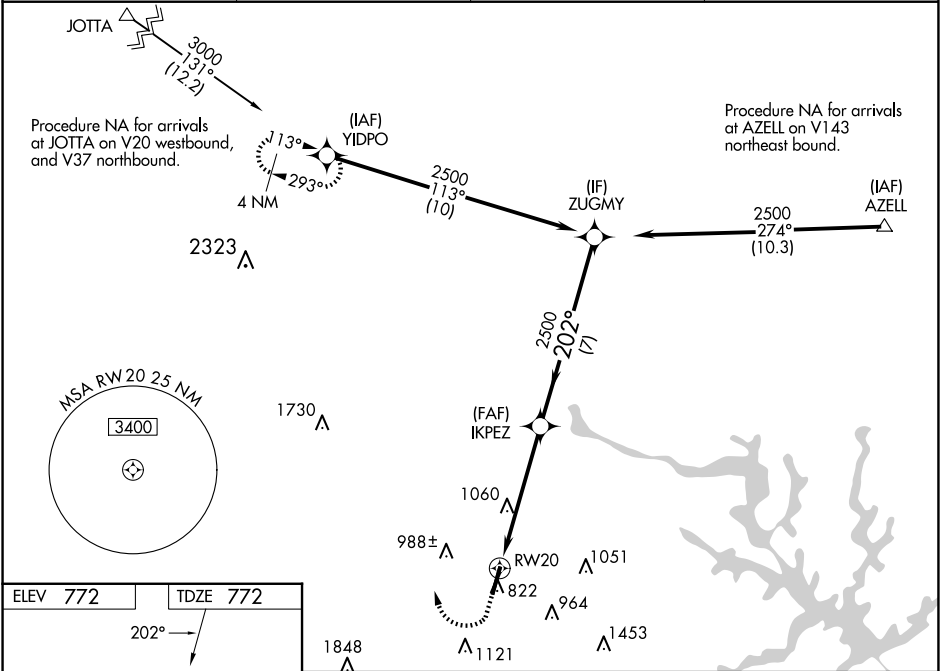


WAAS CH <b>42521</b> <b>W20A</b>	APP CRS <b>202°</b>	Rwy Idg TDZE <b>772</b> Apt Elev <b>772</b>
--	------------------------	---

RNAV (GPS) RWY 20  
MID-CAROLINA RGNL (RUQ)

<p><b>⚠</b> For uncompensated Baro-VNAV systems, LNAV/VNAV NA below -16° C (4°F) or above 39°C (102°F). DME/DME RNP-0.3 NA. When local altimeter setting not received, use Lexington altimeter setting and increase all DA 37 feet and all MDA 40 feet, increase LNAV Cat C and D visibility ½ SM and Circling Cat C visibility ½ SM and Circling Cat D ¼ SM. For inop ALS when using Lexington altimeter setting, increase LNAV Cat C and D visibility to 1¾ SM. VDP and Baro-VNAV NA when using Lexington altimeter setting. For inop ALS, increase LNAV/VNAV visibility to ¾ SM all Cats.</p>	<p>MALSR</p> 	<p>MISSED APPROACH: Climb to 2100 then climbing right turn to 3400 direct YIDPO and hold.</p>
--	--	---

AWOS-3 <b>118.175</b>	CHARLOTTE APP CON <b>128.325 307.8</b>	CLNC DEL <b>127.35</b>	UNICOM <b>122.725 (CTAF)</b> <b>1</b>
--------------------------	---	---------------------------	--



ELEV 772	TDZE 772
202°	202°
1848	2100
3400	YIDPO
*LNAV only.	
*1.7 NM to RWY 20	
RWY 20	
1.7 NM	
3.6 NM	
7 NM	
IKPEZ 2500	
ZUGMY 2500	
GP 3.00° TCH 46	
CATEGORY	A
LPV DA	972-½ 200 (200-½)
LNAV/VNAV DA	1032-½ 260 (300-½)
LNAV MDA	1360-½ 588 (600-½)
CIRCLING	1360-1 588 (600-1)