

KNIGHTS THREE DEPARTURE

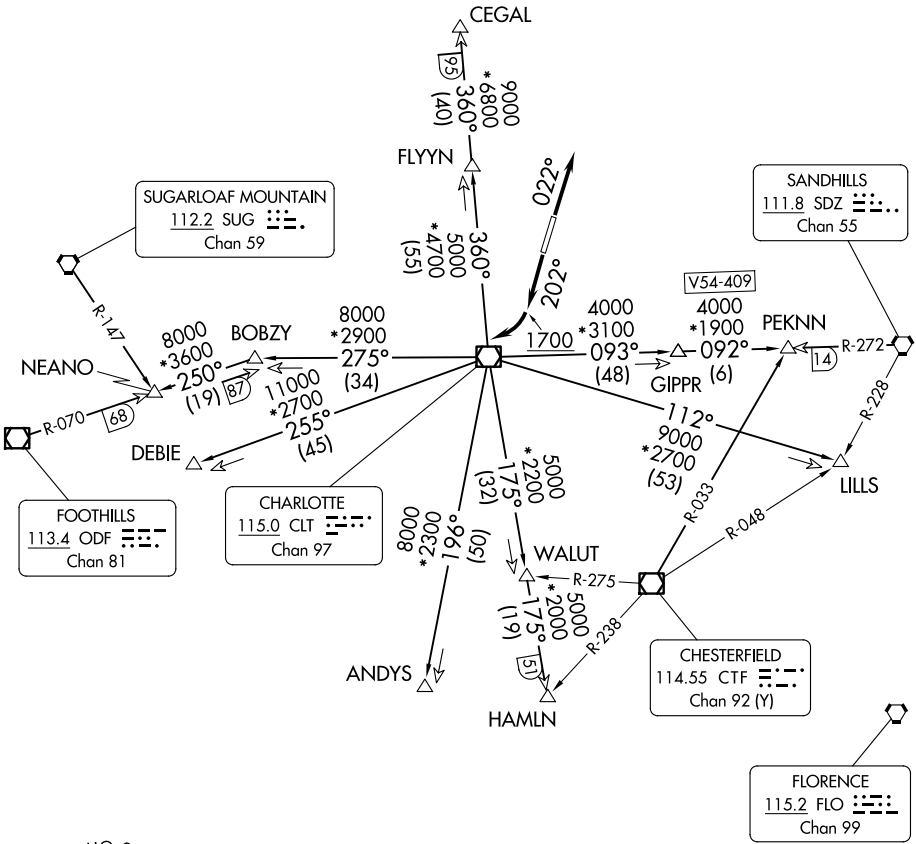
CHARLOTTE DEP CON
128.325 307.8
AWOS-3
118.175
CLNC DEL
127.35
UNICOM (CTAF)
122.725

TOP ALTITUDE:
3000

RADAR and DME required.

TAKEOFF MINIMUMS

Rwy 2: Standard.
Rwy 20: 400-2¾ or standard with minimum climb of 205' per NM to 1300,
or alternatively, with standard takeoff minimums and a normal 200' per NM
climb gradient, takeoff must occur no later than 1200' prior to DER.



NOTE: For propeller aircraft only.
NOTE: Turboprops: Operate in a manner that will
result in best forward speed and climb rate.
NOTE: Transponder code will be issued via
Charlotte clearance delivery.

(CONTINUED ON FOLLOWING PAGE)

NOTE: Chart not to scale.

KNIGHTS THREE DEPARTURE

SE-2, 07 AUG 2025 to 04 SEP 2025

SE-2, 07 AUG 2025 to 04 SEP 2025