

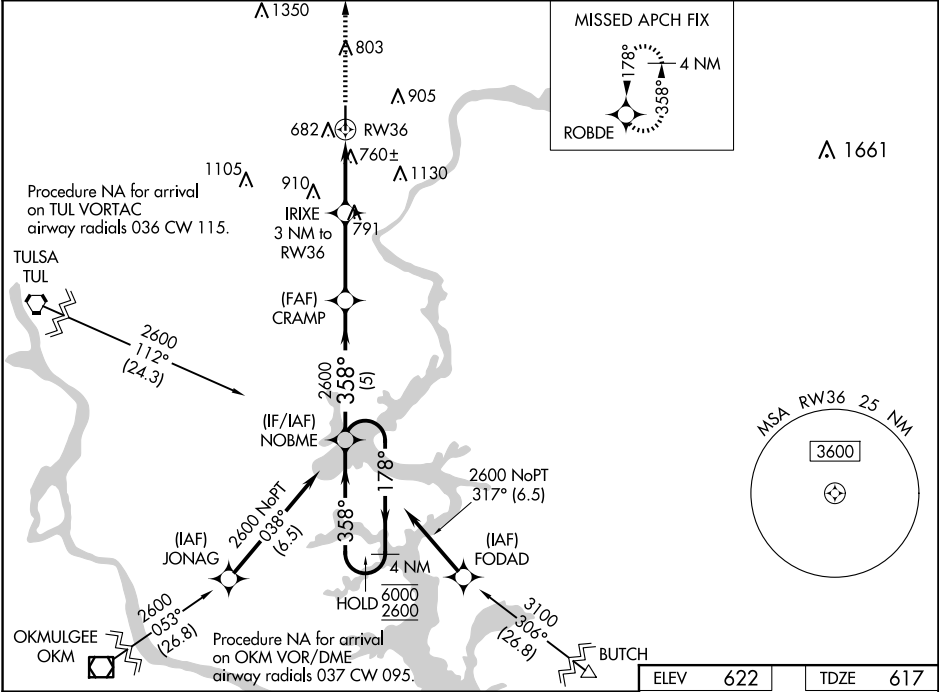
WAAS CH <b>70340</b> <b>W36A</b>	APP CRS <b>358°</b>	Rwy Idg TDZE Apt Elev	<b>5001</b> <b>617</b> <b>622</b>
--	------------------------	-----------------------------	---

RNAV (GPS) RWY 36

MID-AMERICA INDUSTRIAL (H71)

RNP APCH - GPS.	MISSED APPROACH: Climb to 3800 direct ROBDE and hold, continue climb-in-hold to 3800.
<div><div></div><div>Rwy 36 helicopter visibility reduction below 1 SM NA. For uncompensated Baro-VNAV systems, LNAV/VNAV NA below -16°C or above 54°C. Procedure NA at night.</div></div>	

AWOS 3-PT <b>120.1</b>	TUL ASOS <b>124.9 377.2</b>	TULSA APP CON <b>119.1 360.825</b>	UNICOM <b>122.8 (CTAF) ①</b>
---------------------------	--------------------------------	---------------------------------------	---------------------------------



4 NM Holding Pattern		<div>3800</div> <div>ROBDE</div>		
CATEGORY	A	B	C	D
LPV DA	938-1½ 321 (400-1½)			
LNAV/VNAV DA	1131-1½ 514 (600-1½)			
LNAV MDA	1100-1	483 (500-1)	1100-1½	483 (500-1½)
CIRCLING	1200-1	578 (600-1)	1560-2¾ 938 (1000-2¾)	1560-3 938 (1000-3)
REIL Rwy 18 and 36 MIRL Rwy 18-36				