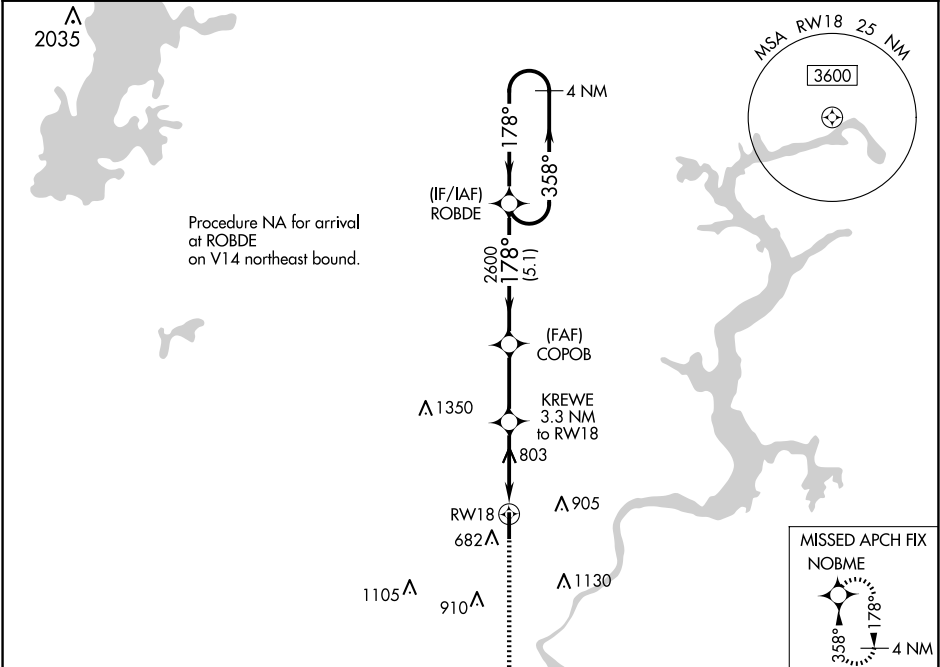


WAAS CH <b>93938</b> <b>W18A</b>	APP CRS <b>178°</b>	Rwy Idg TDZE <b>622</b> Apt Elev <b>622</b>
--	------------------------	---

RNAV (GPS) RWY 18

MID-AMERICA INDUSTRIAL (H71)

RNP APCH - GPS.		MISSED APPROACH: Climb to 2600 direct NOBME and hold.	
NA	Circling Rwy 36 NA at night. For uncompensated Baro-VNAV systems, LNAV/VNAV NA below -16°C or above 54°C.		
AWOS 3-PT <b>120.1</b>	TUL ASOS <b>124.9 377.2</b>	TULSA APP CON <b>119.1 360.825</b>	UNICOM <b>122.8 (CTAF) 0</b>



		ELEV 622	TDZE 622			
GP 3.00° TCH 40		5.1 NM		2.8 NM	1.8	1.5
CATEGORY	A	B	C	D		
LPV DA	943-1 $\frac{1}{8}$ 321 (400-1 $\frac{1}{8}$ )			NA		
LNAV/VNAV DA	1108-1 $\frac{5}{8}$ 486 (500-1 $\frac{5}{8}$ )			NA		
LNAV MDA	1140-1 518 (600-1)		1140-1 $\frac{3}{8}$ 518 (600-1 $\frac{3}{8}$ )	NA		
CIRCLING	1200-1 578 (600-1)		1560-2 $\frac{3}{4}$ 938 (1000-2 $\frac{3}{4}$ )	NA		
		MIRL Rwy 18-36  REIL Rwy 18 and 36				