

WAAS CH 40421 W23A	APP CRS 233°	Rwy Ldg 5718 TDZE 1292 Apt Elev 1313
--	------------------------	---

RNAV (GPS) RWY 23
MOORE-MURRELL (MOR)

V Baro-VNAV NA when using Mc Ghee Tyson altimeter setting. For uncompensated
Δ NA Baro-VNAV systems, LNAV/VNAV NA below -17°C (2°F) or above 35°C (95°F).
 DME/DME RNP-0.3 NA. When local altimeter setting not received, use
 Mc Ghee Tyson altimeter setting and increase all DA 133 feet and all MDA 140
 feet, increase LPV all Cats visibility to 1½ miles, LNAV/VNAV all Cats visibility
 to 5 miles, LNAV and Circling Cat B visibility to 1½ miles and LNAV Cats C
 and D and Circling Cat C visibility to 3 miles.

MISSED APPROACH:
Climb to 5000 direct
SIQCU and on track
299° to MALIN and
hold.

AWOS-3 126.725	KNOXVILLE APP CON 132.8 360.8	UNICOM 122.8 (CTAF) 0
--------------------------	---	---------------------------------

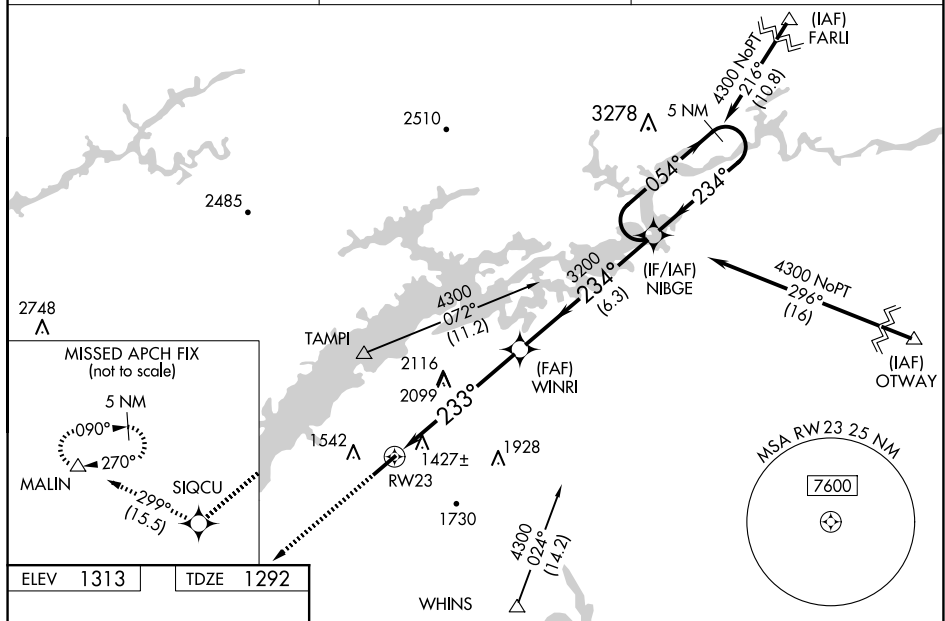


Diagram illustrating the approach procedure for runway 23 (RW23). The approach is a 5.9 NM distance from the holding pattern to the runway. The holding pattern is a 5 NM Holding Pattern at 5718 X 100. The approach is for RW23, with a 3200' altitude and a 234° heading. The diagram also shows the 5 NM Holding Pattern and the 5.9 NM distance to the runway.

RNAV (GPS) RWY 23

SE-1, 07 AUG 2025 to 04 SEP 2025

SE-1, 07 AUG 2025 to 04 SEP 2025