

VORTAC OOM	APP CRS	Rwy Ldg	4501
110.2	159°	TDZE	721
Chan 39		Apt Elev	727

VOR RWY 13

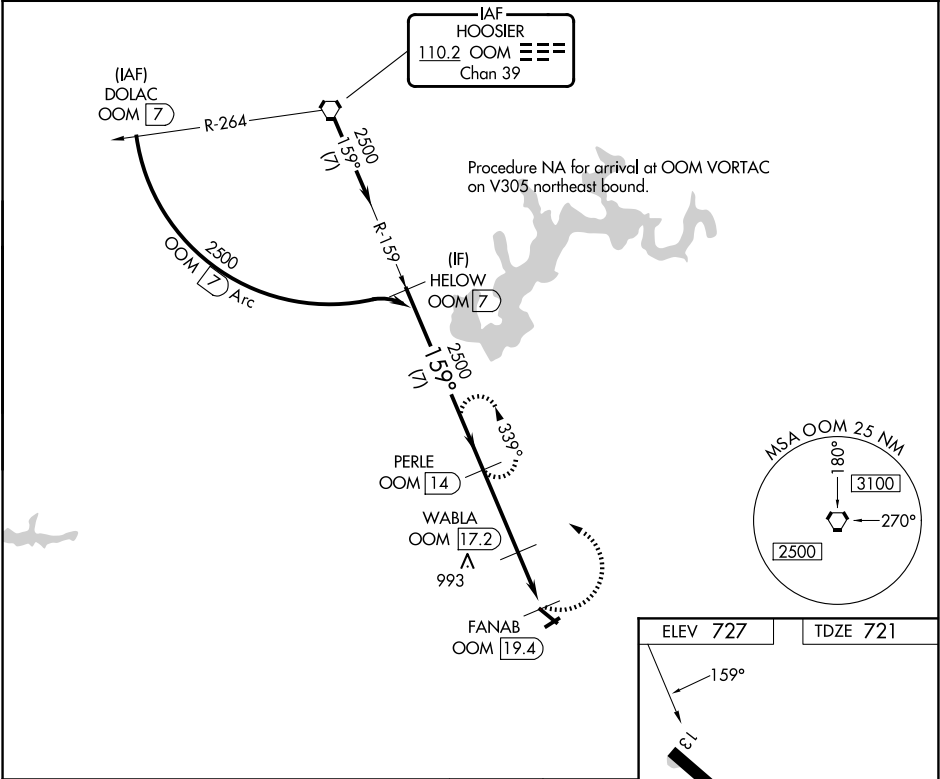
VIRGIL I GRISSOM MUNI (BFR)

DME required.

Procedure NA at night. Rwy 13 helicopter visibility reduction below 1 SM NA. When local altimeter setting not received, use Bloomington altimeter setting: increase all MDAs 80 feet and S-13 and Circling Cts C and D visibilities ¼ SM.

MISSED APPROACH: Climbing left turn to 2500 on OOM VORTAC R-159 to PERLE/14 DME and hold, continue climb-in-hold to 2500.

AWOS-3PT 119.125	LOUISVILLE APP CON 123.675 327.0	UNICOM 122.8 (CTAF) 0
---------------------	-------------------------------------	--------------------------



HELOW OOM 7		PERLE OOM 14		<div><div>2500</div><div>OOM R-159</div></div> <div>PERLE OOM 14</div>	
2500		159°		2500	
		7 NM		3.2 NM	
		2.2 NM		WABLA OOM 17.2	
				FANAB OOM 19.4	
				1380	
CATEGORY	A	B	C	D	
S-13	1300-1	579 (600-1)	1300-1½	579 (600-1½)	
CIRCLING	1300-1	573 (600-1)	1380-1¾ 653 (700-1¾)	1380-2 653 (700-2)	

ELEV 727

TDZE 721

159°

13

4501 X 100

3089 X 70

0.3% UP

31

12

☆

MIRL Rwy 6-24 and 13-31 0

REIL Rwy 13 and 31 0

EC-2, 07 AUG 2025 to 04 SEP 2025

EC-2, 07 AUG 2025 to 04 SEP 2025