

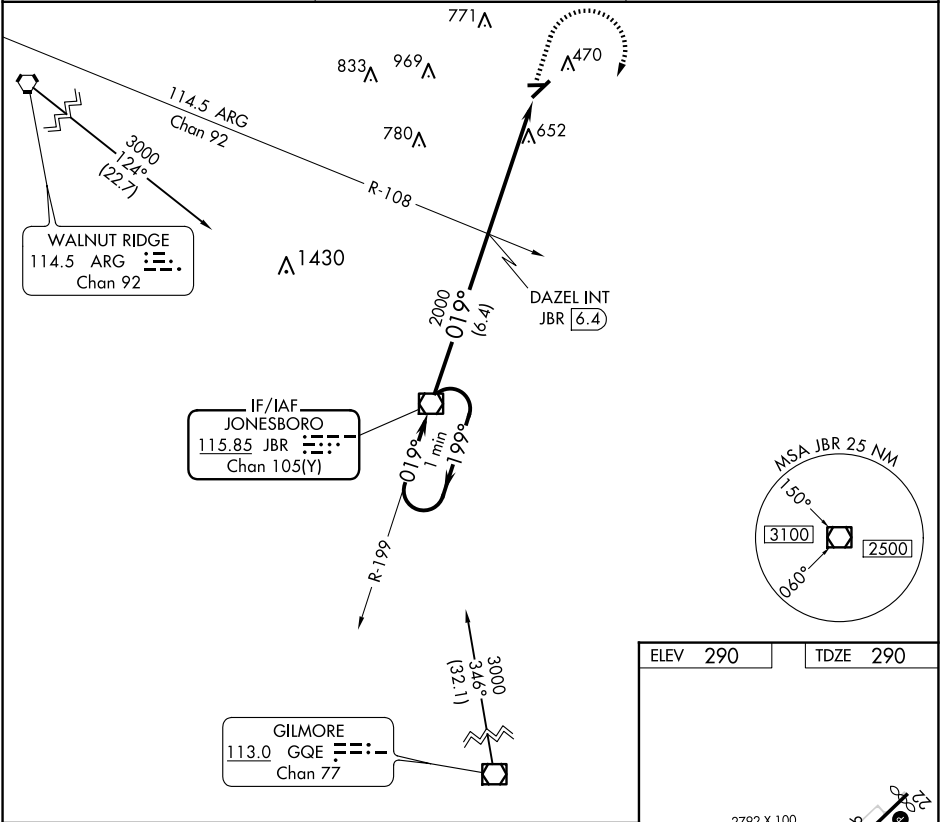
VOR/DME JBR	APP CRS	Rwy Idg	4011
115.85	019°	TDZE	290
Chan 105(Y)		Apt Elev	290

VOR RWY 4

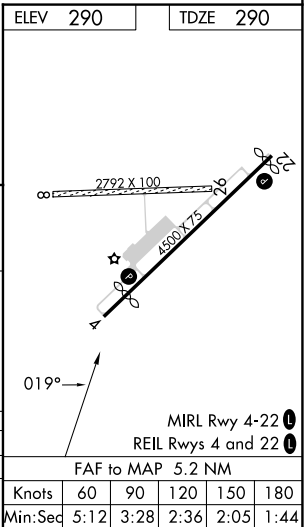
KIRK FLD (PGR)

<div><div>▼</div><div>▲ NA</div></div> <div>Helicopter visibility reduction below 1 SM NA. Procedure NA at night. Circling NA to Rwy 8 and 26. Use Jonesboro altimeter setting; when not received, use Walnut Ridge altimeter setting and increase all MDAs 20 feet.</div>	MISSED APPROACH: Climb to 1500 then climbing right turn to 3000 direct JBR VOR/DME and hold.
--	--

JBR ASOS 118.525	MEMPHIS CENTER 120.075 289.4	UNICOM 122.8 (CTAF) 0
---------------------	---------------------------------	--------------------------



One Minute Holding Pattern		JBR VOR/DME	1500	3000	JBR
3000 ← 199°		019° →	↑	↷	◻
VGSi and descent angles not coincident (VGSi Angle 3.00/TCH 18).		DAZEL INT JBR 6.4	3.00°	JBR 11.7	
		2000	TCH 40		
		6.4 NM	5.2 NM		
CATEGORY	A	B	C	D	
S-4	980-1	690 (700-1)	NA		
CIRCLING	980-1	1000-1	NA		
	690 (700-1)	710 (800-1)			



SC-1, 07 AUG 2025 to 04 SEP 2025

SC-1, 07 AUG 2025 to 04 SEP 2025