

APP CRS
225°

Rwy Idg
4352

TDZE
289

Apt Elev
290

RNAV (GPS) RWY 22

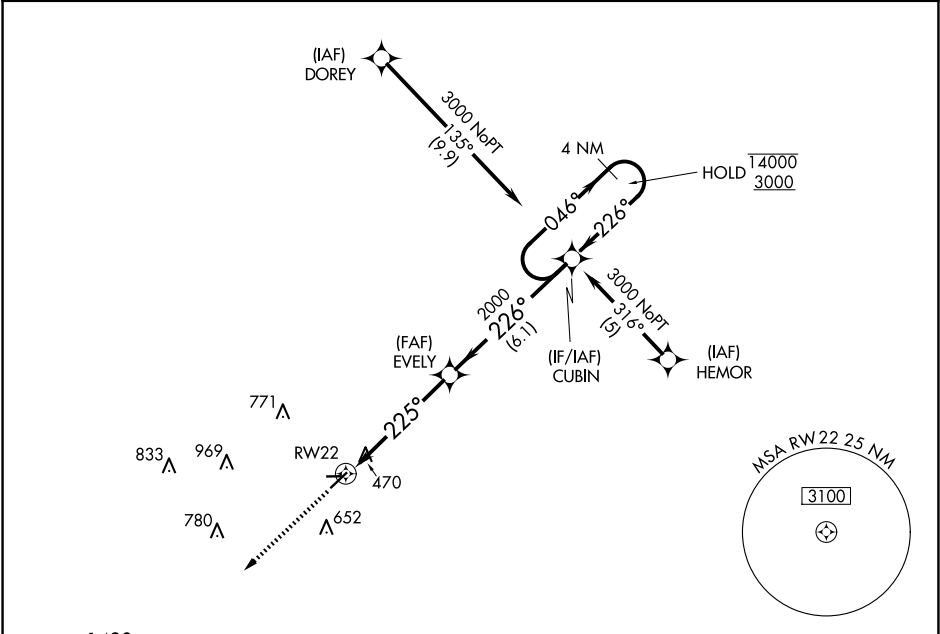
KIRK FLD (PGR)

RNP APCH - GPS

Circling NA to Rwys 8 and 26. Rwy 22 helicopter visibility reduction below 1/4 SM NA. Use Jonesboro altimeter setting; when not received, use Walnut Ridge altimeter setting and increase all MDA 20 feet.

MISSED APPROACH: Climb to 2500 direct AYATO and hold.

JBR ASOS 118.525	MEMPHIS CENTER 120.075 289.4	UNICOM 122.8 (CTAF) 0
----------------------------	--	---------------------------------



2500

AYATO

Visual Segment - Obstacles.

CUBIN

4 NM Holding Pattern

RW22

EVELY

225°

226°

2000

046°

226°

14000

3000

5.1 NM

6.1 NM

CATEGORY	A	B	C	D
LNVA MDA	820-1¼	531 (600-1¼)	NA	
CIRCLING	860-1¼ 570 (600-1¼)	1000-1¼ 710 (800-1¼)	NA	

MIRL Rwy 4-22 0

REIL Rws 4 and 22 0

225° to RW22

2792 X 100

4350 X 75