

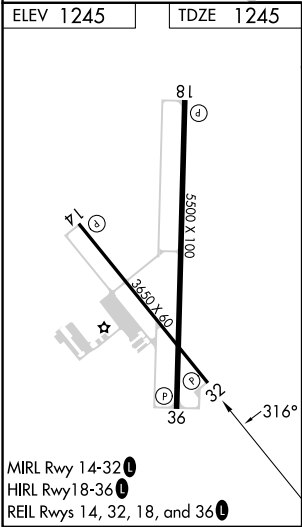
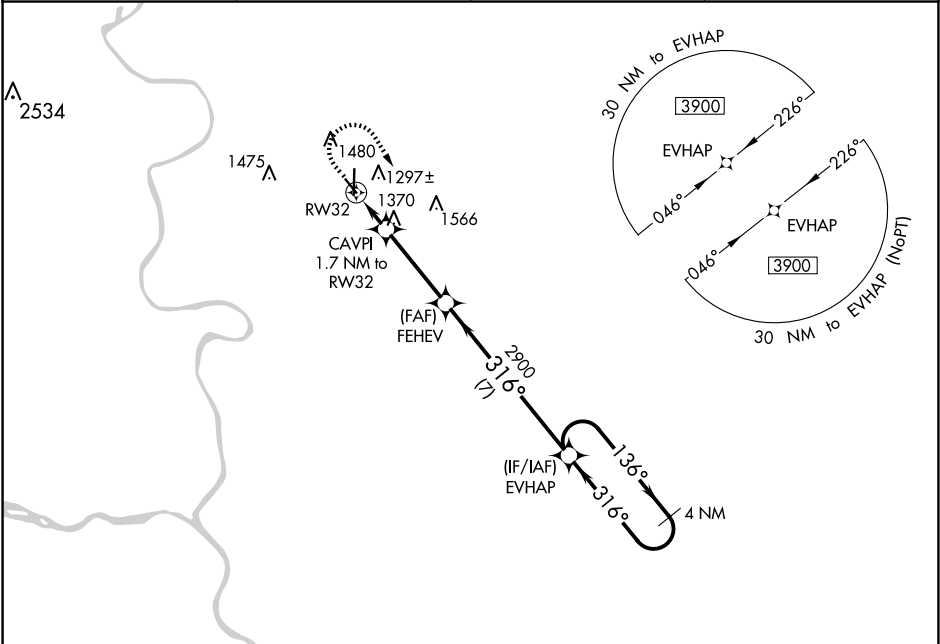
WAAS CH 90441 W32A	APP CRS 316°	Rwy Idg TDZE Apt Elev	3650 1245 1245
--	------------------------	-----------------------------	---

RNAV (GPS) RWY 32

COUNCIL BLUFFS MUNI (CBF)

<div><div>▼</div><div>For uncompensated Baro-VNAV systems, LNAV/VNAV NA below -18°C (0°F) or above 54°C (130°F). DME/DME RNP- 0.3 NA.</div></div>	MISSED APPROACH: Climb to 2000 then climbing right turn to 3900 direct EVHAP and hold.
---	--

AWOS-3 126.575	OMAHA APP CON 124.5 263.0	CLNC DEL 127.675	UNICOM 122.725 (CTAF) 📻
--------------------------	-------------------------------------	----------------------------	--



2000		3900	EVHAP	VGSI and RNAV glidepath not coincident (VGSI Angle 3.50/TCH 30).		4 NM
*LNAV only		CAVPI 1.7 NM to RW32		FEHEV 2900		EVHAP
0.9 NM to RW32		RW32		1820		2900
0.9		0.8	3.4 NM	7 NM		
CATEGORY	A	B	C	D		
LPV DA	1445-¾		200 (200-¾)			
LNAV/VNAV DA	1495-¾		250 (300-¾)			
LNAV MDA	1620-1		375 (400-1)			
<div><div>📻</div><div>CIRCLING</div></div>	1780-1	535 (600-1)	1780-1½ 535 (600-1½)	1880-2 635 (700-2)		