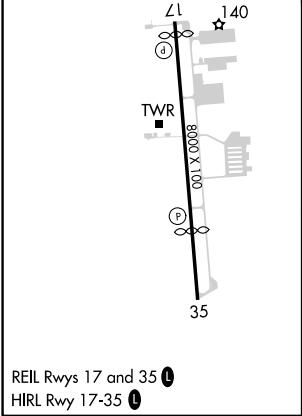
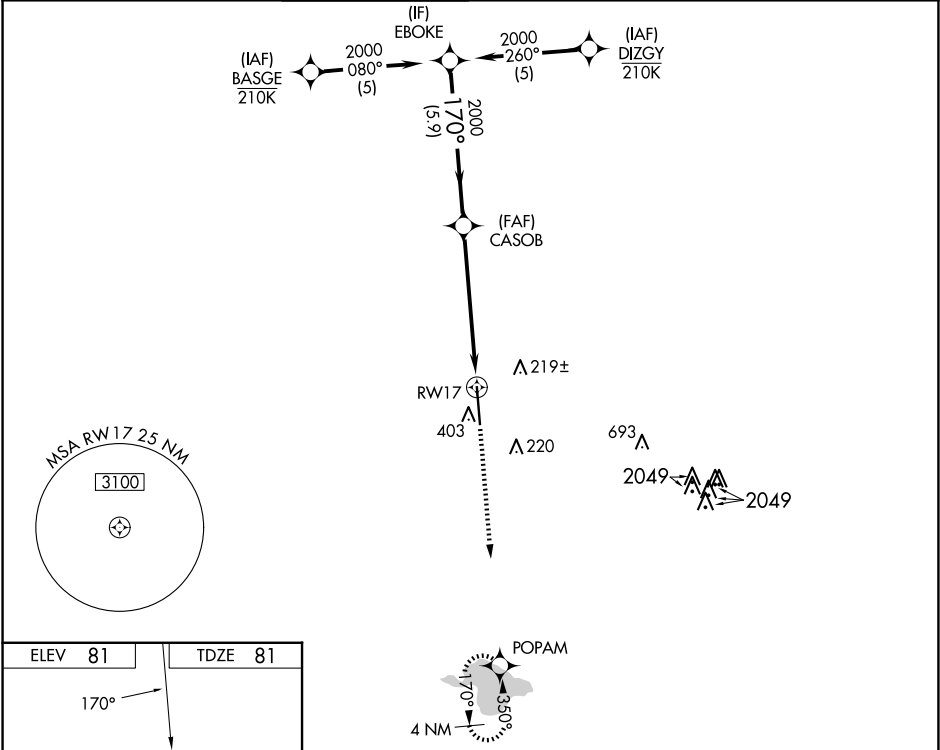


WAAS CH <b>82513</b> <b>W17A</b>	APP CRS <b>170°</b>	Rwy Idg TDZE Apt Elev	<b>7620</b> <b>81</b> <b>81</b>
--	------------------------	-----------------------------	---------------------------------------

RNAV (GPS) RWY 17

SUGAR LAND RGNL (SGR)

RNP APCH - GPS.				MISSED APPROACH: Climb to 2000 direct POPAM and hold.		
For uncompensated Baro-VNAV systems, LNAV/VNAV NA below -4°C or above 54°C. Rwy 17 helicopter visibility reduction below ¾ SM NA.						
ATIS 118.125	HOUSTON APP CON 123.8 257.7	SUGAR LAND TOWER★ 118.65 (CTAF) 0	GND CON 121.4	CLNC DEL 121.4	CLNC DEL 119.25 (when twr closed)	UNICOM 122.95



VGSI and RNAV glidepath not coincident (VGSI Angle 3.50/TCH 52).				2000	POPAM
EBOKE				2000	POPAM
CASOB				2000	POPAM
GP 3.00° TCH 54				1.4 NM to RW17	RW17
5.9 NM				4.5 NM	1.4
CATEGORY	A	B	C	D	
LPV DA		398-1	317 (400-1)		
LNAV/VNAV DA		704-2	623 (700-2)		
LNAV MDA	640-1	559 (600-1)	640-1½	559 (600-1½)	
CIRCLING	720-1	639 (700-1)	720-1¾ 639 (700-1¾)	720-2 639 (700-2)	