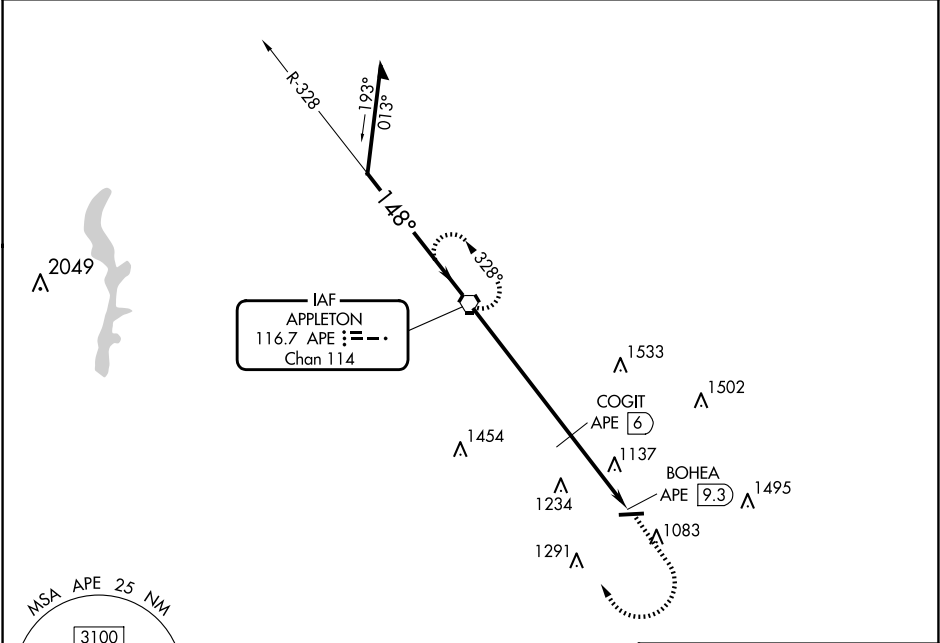


VORTAC APE <b>116.7</b> Chan <b>114</b>	APP CRS <b>148°</b>	Rwy Idg TDZE Apt Elev <b>884</b>	<b>N/A</b> <b>N/A</b> <b>884</b>
-----------------------------------------------	------------------------	-------------------------------------------	----------------------------------------

VOR-A

LICKING COUNTY RGNL (VTA)

<div><div>⚠</div><div>⚠</div></div> <div>Circling Rwy 9 NA at night.</div>		MISSED APPROACH: Climb to 3000 then right turn direct APE VORTAC and hold.		
ASOS <b>121.125</b>	COLUMBUS APP CON <b>125.95 317.775</b>	CLNC DEL <b>125.175</b>	UNICOM <b>122.7</b> (CTAF)	<b>123.3</b>



Remain within 10 NM		APE VORTAC		3000		APE
3000		328°	148°	3000		
		COGIT APE [6]		BOHEA APE [9.3]	*1980	
		6 NM		3.3 NM		
CATEGORY	A	B	C	D		
CIRCLING	1980-1¼ 1096 (1100-1¼)	1980-1½ 1096 (1100-1½)	1980-3	1096 (1100-3)	MIRL Rwy 9-27 REIL Rwys 9 and 27	
COGIT FIX MINIMUMS						FAF to MAP 9.3 NM
CIRCLING	1620-1	736 (800-1)	1700-2½ 816 (900-2½)	1760-2¾ 876 (900-2¾)		
				Knots	60	90 120 150 180
				Min:Sec	9:18	6:12 4:39 3:43 3:06

EC-2, 07 AUG 2025 to 04 SEP 2025

EC-2, 07 AUG 2025 to 04 SEP 2025