

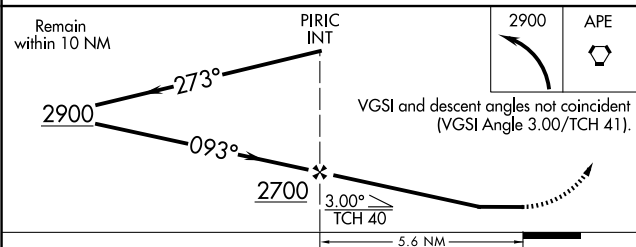
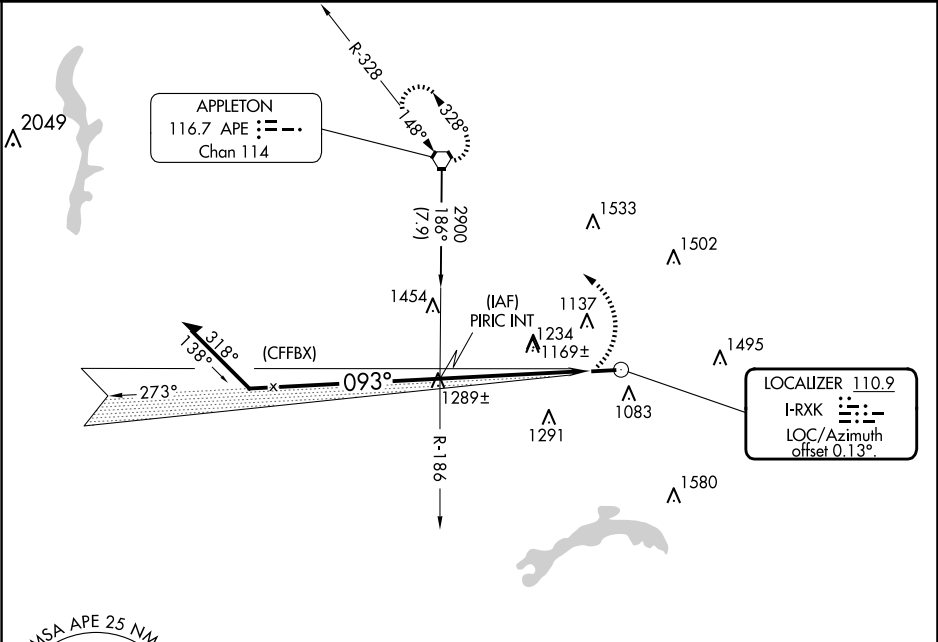
LOC I-RXK <b>110.9</b>	APP CRS <b>093°</b>	Rwy Idg <b>4192</b> TDZE <b>884</b> Apt Elev <b>884</b>
---------------------------	------------------------	---

LOC RWY 9

LICKING COUNTY RGNL (VTA)

<div><div>▼</div><div>NA</div></div> <div>Rwy 9 helicopter visibility reduction below 1 SM NA. Straight-in and Circling Rwy 9 NA at night.</div>	MISSED APPROACH: Climbing left turn to 2900 direct APE VORTAC and hold.
--	---

ASOS <b>121.125</b>	COLUMBUS APP CON <b>125.95 317.775</b>	CLNC DEL <b>125.175</b>	UNICOM <b>122.7</b> (CTAF)	<b>123.3</b>
------------------------	---	----------------------------	-------------------------------	--------------



ELEV 884

TDZE 884

MIRL Rwy 9-27

REIL Rwys 9 and 27

FAF to MAP 5.6 NM

Knots	60	90	120	150	180
Min:Sec	5:36	3:44	2:48	2:14	1:52

EC-2, 07 AUG 2025 to 04 SEP 2025

EC-2, 07 AUG 2025 to 04 SEP 2025