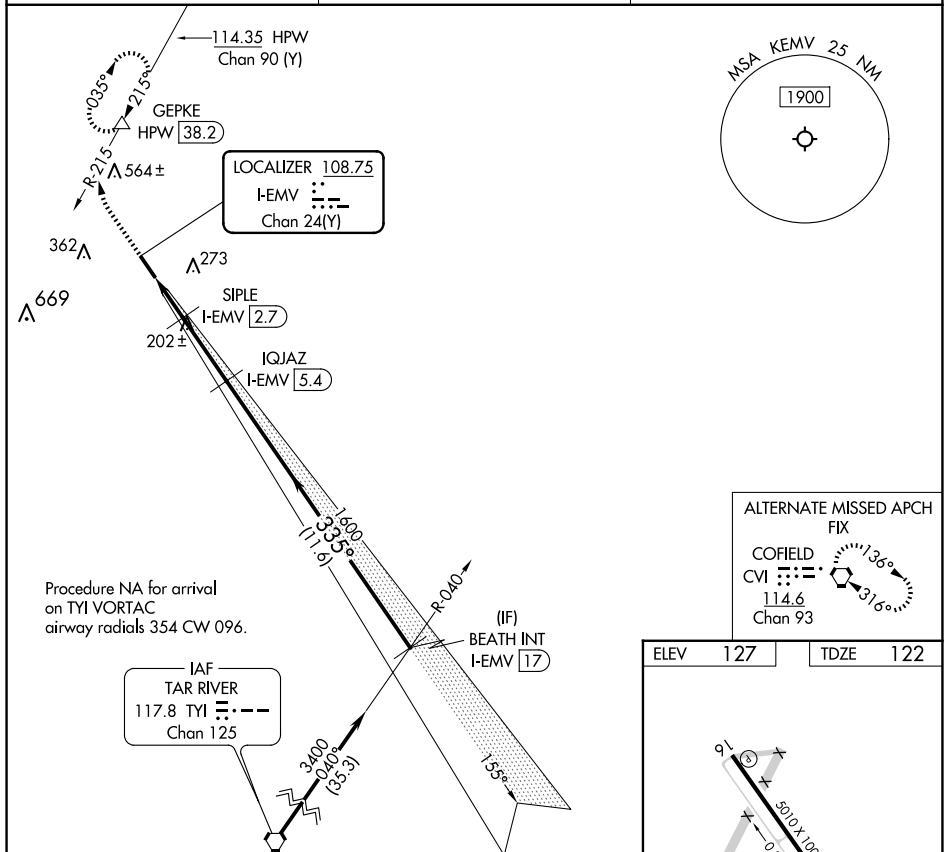


LOC RWY 34
EMPORIA-GREENSVILLE RGNL (EMV)

MISSED APPROACH: Climb to 600 then climbing right turn to 5000 on HPW VORTAC R-215 to GEPKE/HPW 38.2 DME and hold, continue climb-in-hold to 5000.

A NA

AWOS-3 124.175	WASHINGTON CENTER 132.025 290.425	UNICOM 123.0 (CTAF) 0
--------------------------	---	---------------------------------



ALTERNATE MISSED APCH FIX

COFIELD
CVI $\overline{\cdot\cdot\cdot}=\overline{\cdot\cdot\cdot}$
114.6
Chan 93

ELEV	127	TDZE	122
------	-----	------	-----

REIL Rwy 16 and 34

MIRL Rwy 16-34

FAF to MAP 4.6 NM					
Knots	60	90	120	150	180
Min:Sec	4:36	3:04	2:18	1:50	1:32