

WAAS CH 62822 W16A	APP CRS 161°	Rwy Idg 4901 TDZE 1296 Apt Elev 1300
--	------------------------	---

RNAV (GPS) RWY 16

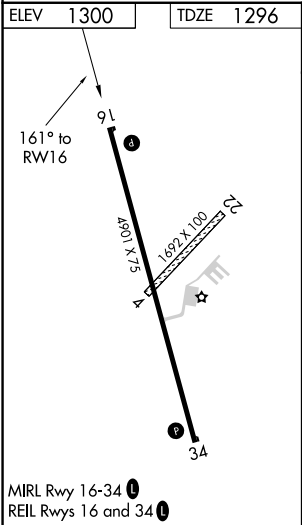
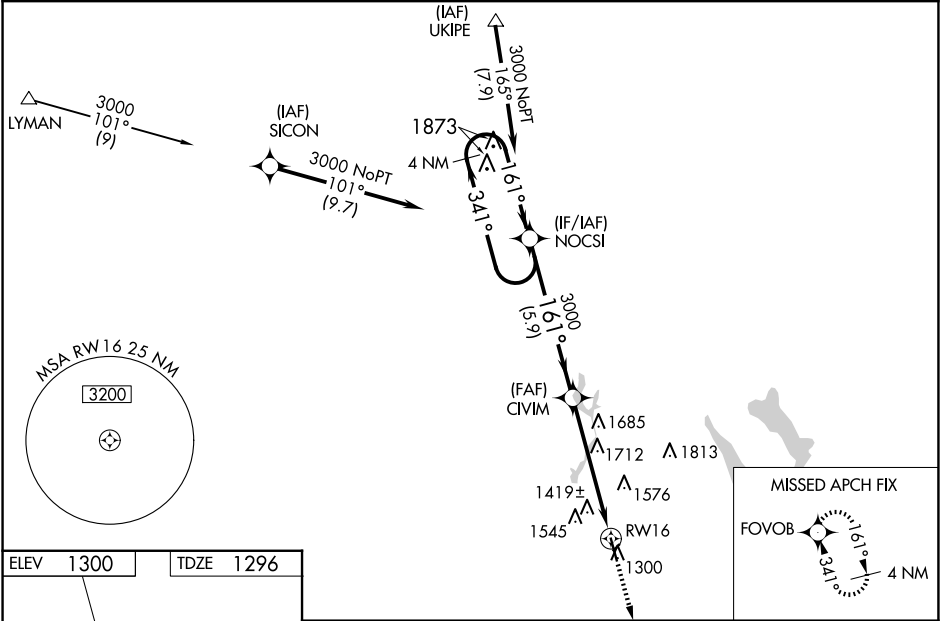
CRESTON MUNI (CSQ)

⚠

Baro-VNAV NA when using Des Moines altimeter setting. For uncompensated Baro-VNAV systems, LNAV/VNAV NA below -17°C (2°F) or above 54°C (130°F). DME/DME RNP-0.3 NA. Helicopter visibility reduction below ¾ SM NA. Circling NA to Rwy 4-22. Circling NA for Cats B and C west of Rwy 16-34. When local altimeter setting not received, use Des Moines altimeter setting and increase all DA 150 feet and all MDA 160 feet; increase LPV all Cats visibility ¾ mile, LNAV/VNAV all Cats visibility ½ mile, LNAV and Circling Cat A/B visibility ¼ mile, and LNAV and Circling Cat C visibility ½ mile.

MISSED APPROACH:
Climb to 3000 direct
FOVOB and hold.

AWOS-3 124.75	MINNEAPOLIS CENTER 125.65 306.95	UNICOM 122.8 (CTAF) 0
-------------------------	--	---------------------------------



4 NM Holding Pattern		NOCSI		CIVIM		3000	FOVOB
3000		341°		161°		3000	RW16
GP 3.00°		TCH 46		5.9 NM		5.2 NM	
CATEGORY	A	B	C	D			
LPV DA	1546-1		250 (300-1)		NA		
LNAV/VNAV DA	1730-1½		434 (500-1½)		NA		
LNAV MDA	2020-1	724 (800-1)	2020-2 724 (800-2)		NA		
CIRCLING	2020-1	720 (800-1)	2020-2 720 (800-2)		NA		