

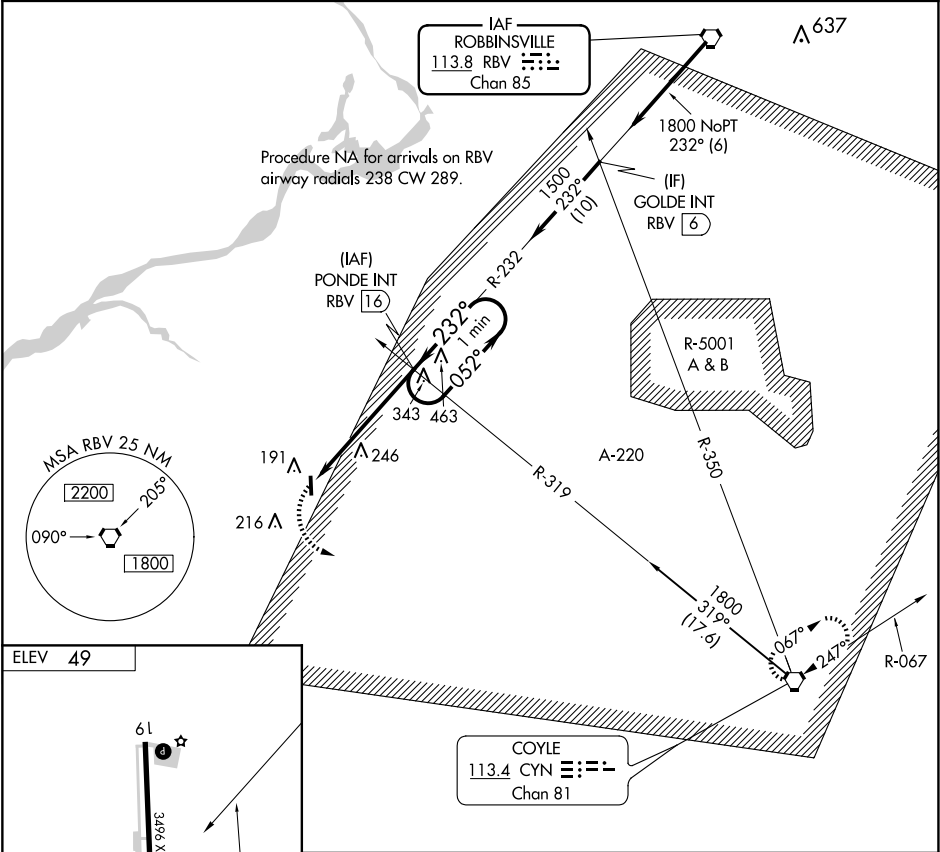
VORTAC RBV <b>113.8</b> Chan 85	APP CRS <b>232°</b>	Rwy Idg TDZE Apt Elev	<b>N/A</b> <b>N/A</b> <b>49</b>
---------------------------------------	------------------------	-----------------------------	---------------------------------------

VOR-A

FLYING W (N14)

<div><div>▼</div><div>▲ NA</div></div> <div>Helicopter visibility reduction below 1 SM NA. Use Mount Holly altimeter setting, when not received use Northeast Philadelphia altimeter setting and increase all MDA 40 feet. Night Landing: Rwy 1 NA.</div>	<div>MISSED APPROACH: Climbing left turn to 2000 direct CYN VORTAC and hold.</div>
---	--

VAY ASOS <b>119.325</b>	MC GUIRE APP CON <b>126.475 363.8</b>	UNICOM <b>122.8</b> (CTAF) <b>0</b>
----------------------------	--	--



232°

75

0.4% UP

P

MIRL Rwy 1-19

REIL Rws 1 and 19

2000

CYN

PONDE INT

RBV 16

One Minute Holding Pattern

052°

232°

1500

5.4 NM

FAF to MAP 5.4 NM					
CATEGORY	A		B		C D
CIRCLING	600-1 551 (600-1)		600-1¼ 551 (600-1¼)		NA
Knots	60	90	120	150	180
Min:Sec	5:24	3:36	2:42	2:10	1:48