

| | | |
|--|------------------------|---|
| WAAS CH 48922 W19A | APP CRS 186° | Rwy Idg 6503 TDZE 320 Apt Elev 346 |
|--|------------------------|---|

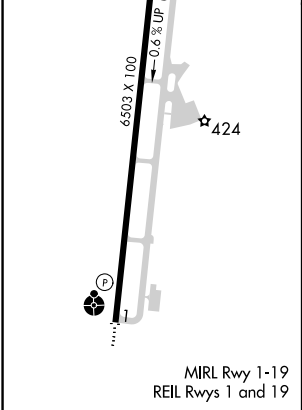
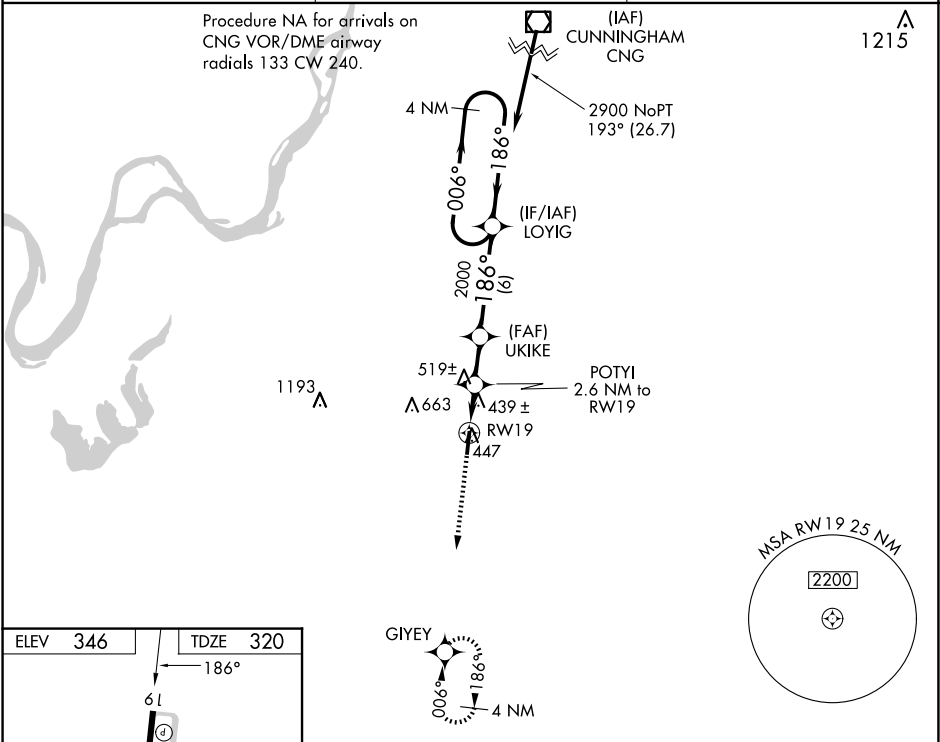
RNAV (GPS) RWY 19
EVERETT-STEWART RGNL (UCY)






NA

For uncompensated Baro-VNAV systems, LNAV/VNAV NA below -15°C (5°F) or above 54°C (130°F). DME/DME RNP-0.3 NA. VDP and Baro-VNAV NA with Dyersburg altimeter setting. When local altimeter setting not received, use Dyersburg altimeter setting and increase all DA 72 feet and all MDA 80 feet, increase LPV all Cats visibility ¼ SM, LNAV/VNAV all Cats visibility ¼ SM, LNAV Cats C/D visibility ¾ SM, and Circling Cat D visibility ¼ SM.

MISSED APPROACH:
Climb to 2300 direct GIYEV and hold.

| | | |
|--------------------------|--|---------------------------------|
| AWOS-3 135.325 | MEMPHIS CENTER 133.65 292.15 | UNICOM 122.7 (CTAF) 1 |
|--------------------------|--|---------------------------------|



| | | | | | |
|--|---|---|------------------------|-------------------------|---|
| 2300 | GIYEV | VGSI and RNAV glidepath not coincident (VGSI Angle 3.00/TCH 29). | | 4 NM Holding Pattern | |
|  |  | POTYI 2.6 NM to RW19 | UKIKE 2000 | LOYIG | |
| *LNAV only. | | *1.1 NM to RW19 | 1160* | 006° → 2900 ← 186° | |
|  |  | 1.1 | 1.5 | GP 3.00° TCH 40 | |
| | | ← 2.6 NM | | ← 6 NM | |
| CATEGORY | A | | B | C | D |
| LPV DA | | | 570-7/8 | 250 (300-7/8) | |
| LNAV/ VNAV | DA | 719-13/8 | | 399 (400-13/8) | |
| LNAV MDA | | | 700-1 | 380 (400-1) | |
|  CIRCLING | 760-1 414 (500-1) | 800-1 454 (500-1) | 820-1½ 474 (500-1½) | 1020-2¼ 674 (700-2¼) | |

SE-1, 07 AUG 2025 to 04 SEP 2025

SE-1, 07 AUG 2025 to 04 SEP 2025