

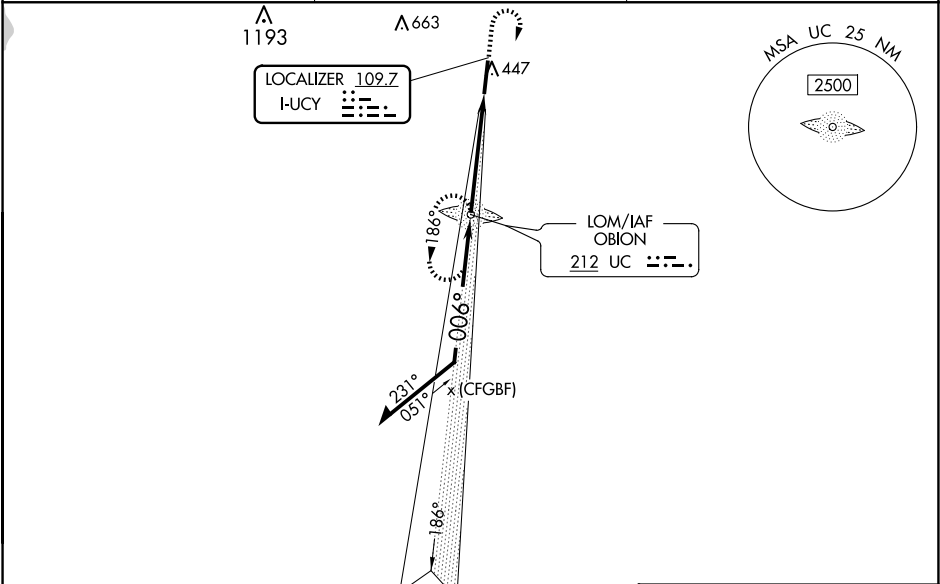
LOC I-UCY 109.7	APP CRS 006°	Rwy Idg 6503 TDZE 346 Apt Elev 346	ILS or LOC RWY 1 EVERETT-STEWART RGNL (UCY)
---------------------------	------------------------	---	--

ADF required. When local altimeter setting not received, use Dyersburg altimeter setting and increase all DA 72 feet and all MDA 80 feet, increase S-LOC 1 Cat C/D visibility to 1½ mile, Circling Cat C visibility to 1½ mile and Circling Cat D visibility to 2½ mile. Inop table does not apply to S-ILS 1. For inop ODALS, increase S-LOC 1 Cat C/D visibility to 1½ mile. For inop ODALS when using Dyersburg altimeter setting, increase S-ILS 1 all Cats visibility to ¾ mile and S-LOC 1 Cat D visibility to 1½ mile.

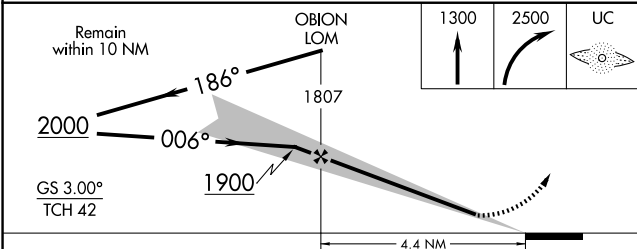
ODALS

MISSED APPROACH:
Climb to 1300 then climbing right turn to 2500 direct OBION LOM and hold.

AWOS-3 135.325	MEMPHIS CENTER 133.65 292.15	UNICOM 122.7 (CTAF) 0
--------------------------	--	---------------------------------



ADF and RADAR
REQUIRED



CATEGORY	A	B	C	D
S-ILS 1	546-¾ 200 (200-¾)			
S-LOC 1	820-¾ 474 (500-¾)	820-1¼ 474 (500-1¼)		
CIRCLING	820-1 474 (500-1)	820-1½ 1020-2¼ 474 (500-1½) 674 (700-2¼)		

