

APP CRS  
355°

Rwy Idg  
5001

TDZE  
42

Apt Elev  
42

RNAV (GPS) RWY 34

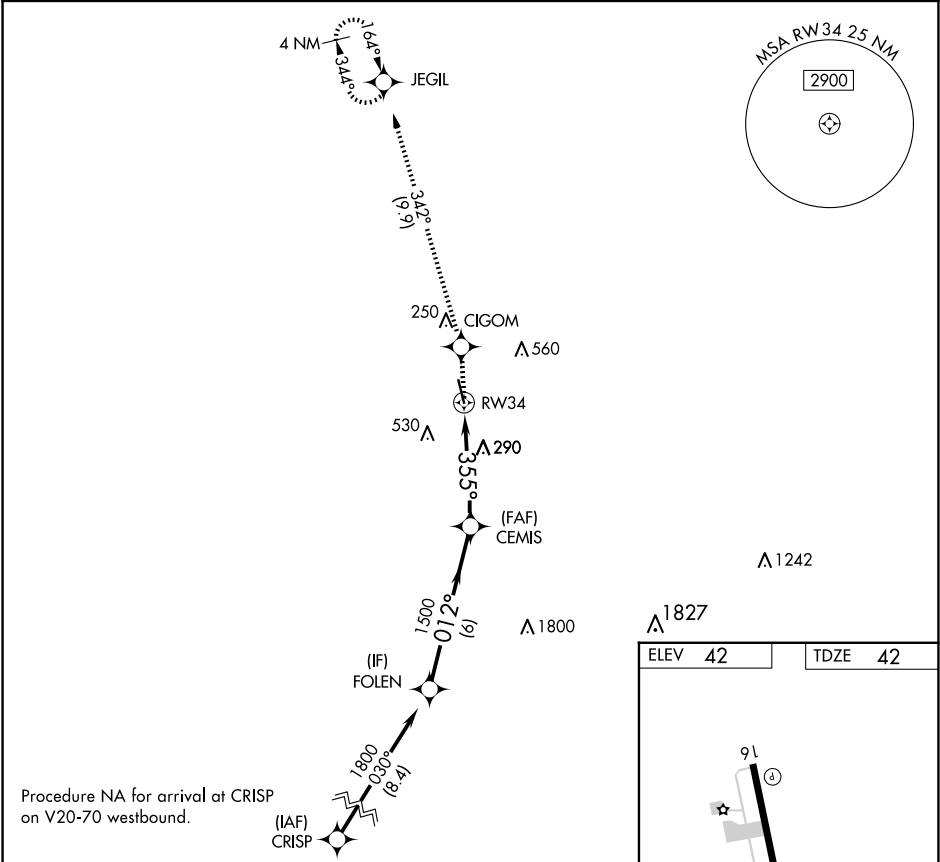
EUNICE (4R7)

RNP APCH.

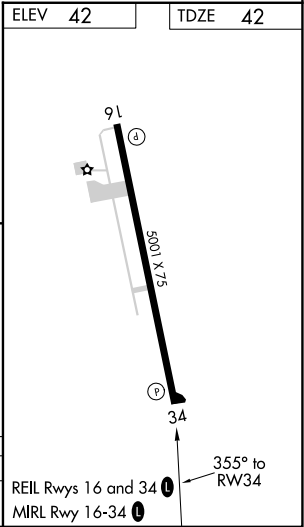
Procedure NA at night. Rwy 34 helicopter visibility reduction below 1 SM NA. Use Lafayette Rgnl/Paul Fournet Fld altimeter setting.

MISSED APPROACH: Climb to 1700 direct CIGOM and on 342° track to JEGIL and hold.

LFT ASOS 134.05	LAFAYETTE APP CON ★ 128.7 268.7	GCO 135.075	UNICOM 122.8 (CTAF) 0
--------------------	------------------------------------	----------------	--------------------------



1700 ↑	CIGOM ✧	342° tr	JEGIL ✧	Visual Segment - Obstacles.		FOLEN
				CEMIS	✧	1800
RW34				012°		
355°				1500		
4.4 NM				6 NM		
CATEGORY	A		B	C		D
LNAV MDA	660-1 618 (700-1)		660-1¾ 618 (700-1¾)		NA	



SC-4, 07 AUG 2025 to 04 SEP 2025

SC-4, 07 AUG 2025 to 04 SEP 2025