

FAIRHOPE, ALABAMA

AL-5522 (FAA)

23334

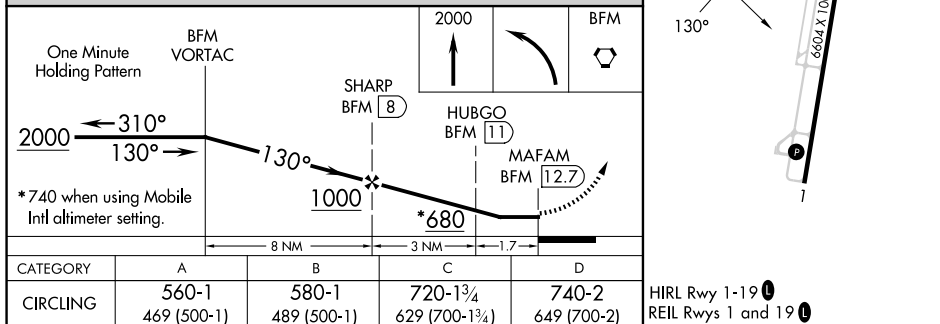
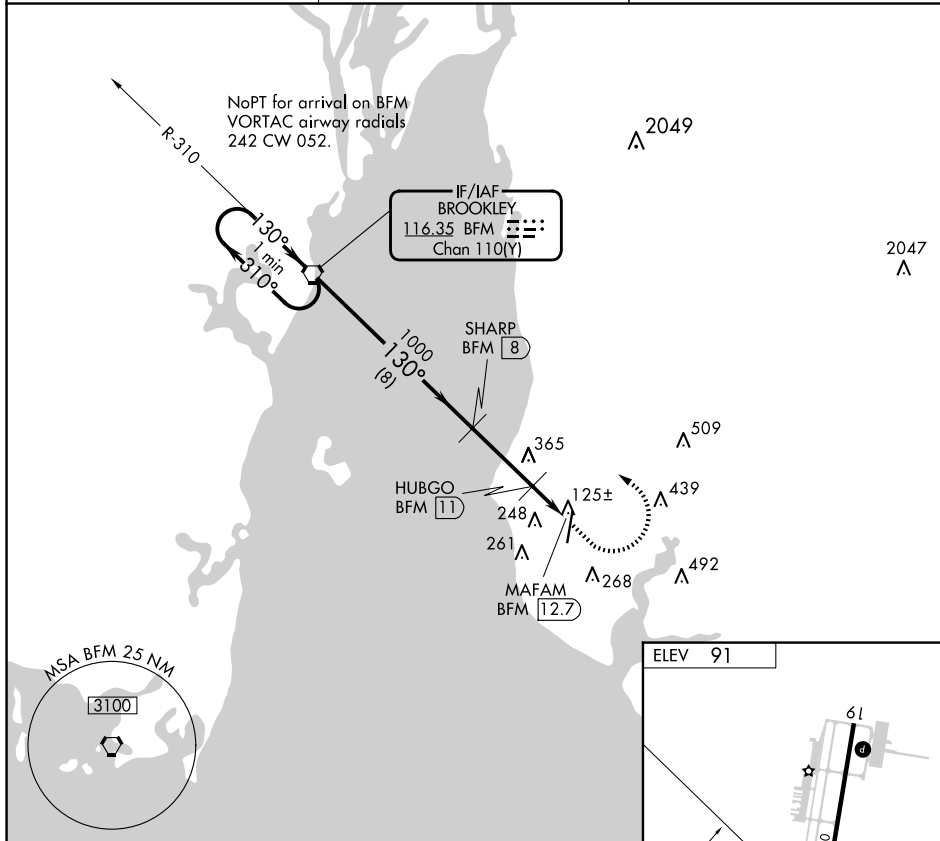
| | | | |
|--|------------------------|-----------------------------|---------------------------------------|
| VORTAC BFM 116.35 Chan 110 (Y) | APP CRS 130° | Rwy Idg TDZE Apt Elev | N/A N/A 91 |
|--|------------------------|-----------------------------|---------------------------------------|

VOR/DME-A
H L SONNY CALLAHAN (CQF)

T When local altimeter setting not received, use Mobile Intl altimeter setting and increase all MDA 60 feet; increase Circling Cats C/D visibility $\frac{1}{4}$ SM.

MISSED APPROACH: Climb to 2000 then left turn direct BFM Vortac and hold.

| | | |
|----------------------------|--|--|
| AWOS-3PT 118.425 | MOBILE APP CON ★ 118.5 269.3 | UNICOM 123.0 (CTAF) 0 |
|----------------------------|--|--|



FAIRHOPE, ALABAMA
Amdt 7A 20MAY21

30°28'N-87°53'W

H L SONNY CALLAHAN (CQF)
VOR/DME-A

SE-4, 07 AUG 2025 to 04 SEP 2025

SE-4, 07 AUG 2025 to 04 SEP 2025