

| | | |
|--|------------------------|---|
| WAAS CH 99313 W19A | APP CRS 190° | Rwy Idg 6604 TDZE 91 Apt Elev 91 |
|--|------------------------|---|

RNAV (GPS) RWY 19

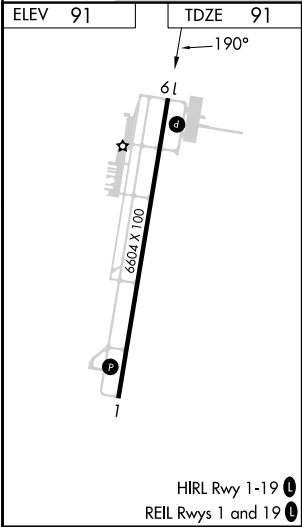
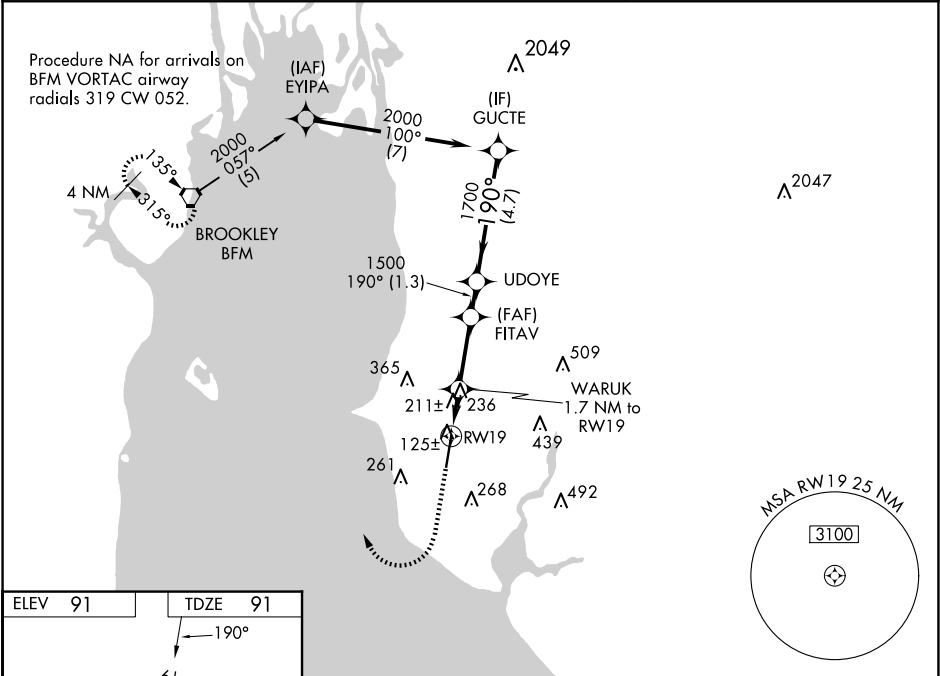
H L SONNY CALLAHAN (CQF')

T Baro-VNAV NA when using Mobile Intl altimeter setting. For uncompensated Baro-VNAV systems, LNAV/VNAV NA below -15°C (5°F) or above 43°C (109°F).

A DME/DME RNP-0.3 NA. VDP NA with Mobile Intl altimeter setting. When local altimeter setting not received, use Mobile Intl altimeter setting and increase LPV DA to 383 feet, LNAV/VNAV DA to 555 feet and all MDA 60 feet; increase LNAV and Circling Cats C/D visibility ¼ SM.

MISSED APPROACH: Climb to 1500 then climbing right turn to 2000 direct BFM Vortac and hold.

| | | |
|----------------------------|--|---------------------------------|
| AWOS-3PT 118.425 | MOBILE APP CON ★ 118.5 269.3 | UNICOM 123.0 (CTAF) 0 |
|----------------------------|--|---------------------------------|



| | | | | | | | | | |
|-----------------|--------------------|----------------------|--|--------|--|-------------------|-------------------|--|--|
| 1500 | 2000 | BFM | | | | | | | |
| *LNAV only. | | WARUK 1.7 NM to RW19 | FITAV 1500 | UDOYE | GUCTE 2000 | Procedure Turn NA | | | |
| *1.2 NM to RW19 | | 660* | 1500 | 1700 | 190° | GP 3.00° TCH 35 | | | |
| 1.2 | | 0.5 | 2.6 | 1.3 NM | 4.7 NM | | | | |
| CATEGORY | A | | B | | C | | D | | |
| LPV DA | 341-7 ⁸ | | 250 (300-7 ⁸) | | | | | | |
| LNAV/VNAV DA | 513-1 ² | | 422 (500-1 ²) | | | | | | |
| LNAV MDA | 500-1 409 (500-1) | | 500-1 ⁸ 409 (500-1 ⁸) | | | | | | |
| CIRCLING | 560-1 469 (500-1) | | 580-1 489 (500-1) | | 720-1 ³ ₄ 629 (700-1 ³ ₄) | | 740-2 649 (700-2) | | |