

APP CRS
076°

Rwy Idg
4997

TDZE
24

Apt Elev
26

RNAV (GPS) RWY 8

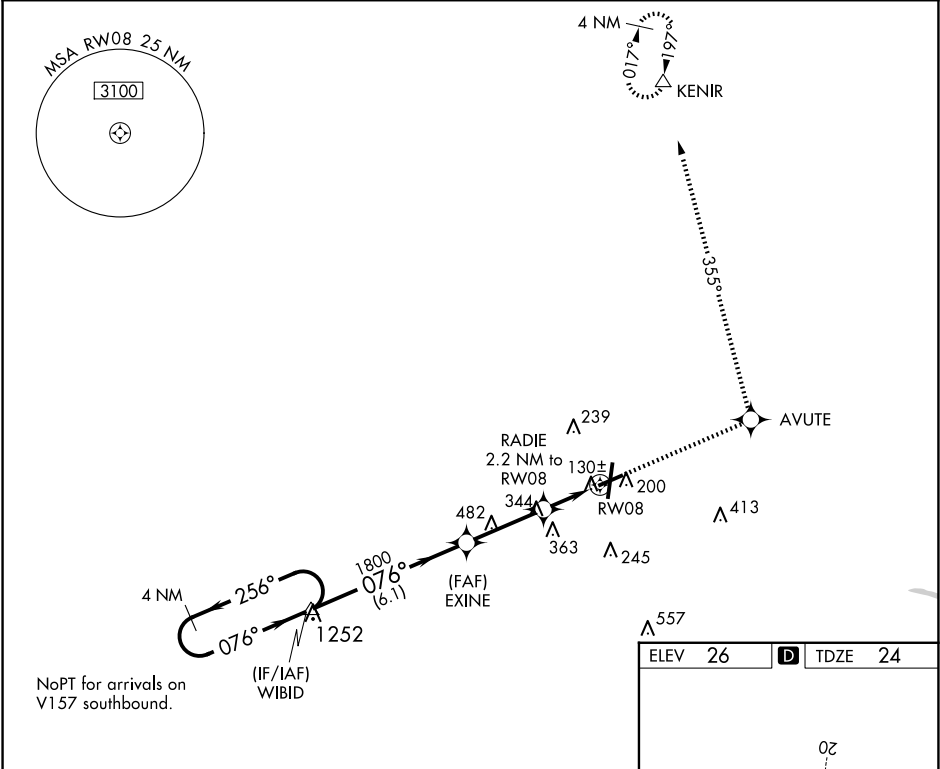
PITT-GREENVILLE (PGV)

RNP APCH - GPS.

▼ Rwy 8 helicopter visibility reduction below ¾ SM NA. When local altimeter setting not received use Washington altimeter setting and increase all MDAs 60 feet, LNAV visibility Cat C and D ½ SM and Circling visibility Cat D ¼ SM.

MISSED APPROACH: Climb to 3000 direct AVUTE and via 355° track to KENIR and hold.

| | | |
|--------------------------|---|---------------------------------|
| AWOS-3 128.425 | WASHINGTON CENTER 123.85 279.65 | UNICOM 122.8 (CTAF) 1 |
|--------------------------|---|---------------------------------|



VGSI and descent angles not coincident (VGSI Angle 4.00/TCH 53).

4 NM Holding Pattern

WIBID

EXINE

RADIE

RWY 08

3000 AVUTE tr 355° KENIR

2700 256° 076° 1800 076° 780

6.1 NM 3 NM 2.2 NM

| CATEGORY | A | B | C | D |
|----------|-------------------|-------------------|-----------------------|-----------------------|
| LNAV MDA | 500-1 476 (500-1) | | 500-1 ¾ 476 (500-1 ¾) | |
| CIRCLING | 600-1 574 (600-1) | 620-1 594 (600-1) | 700-2 674 (700-2) | 800-2 ½ 774 (800-2 ½) |

HIRL Rwy 2-20 1

MIRL Rwy 8-26 1

REIL Rws 2, 8, and 26