

WAAS	APP CRS	Rwy Idg	6904
CH 42738	017°	TDZE	24
W02A		Apt Elev	26

RNAV (GPS) RWY 2

PITT-GREENVILLE (PGV)

RNP APCH-GPS.

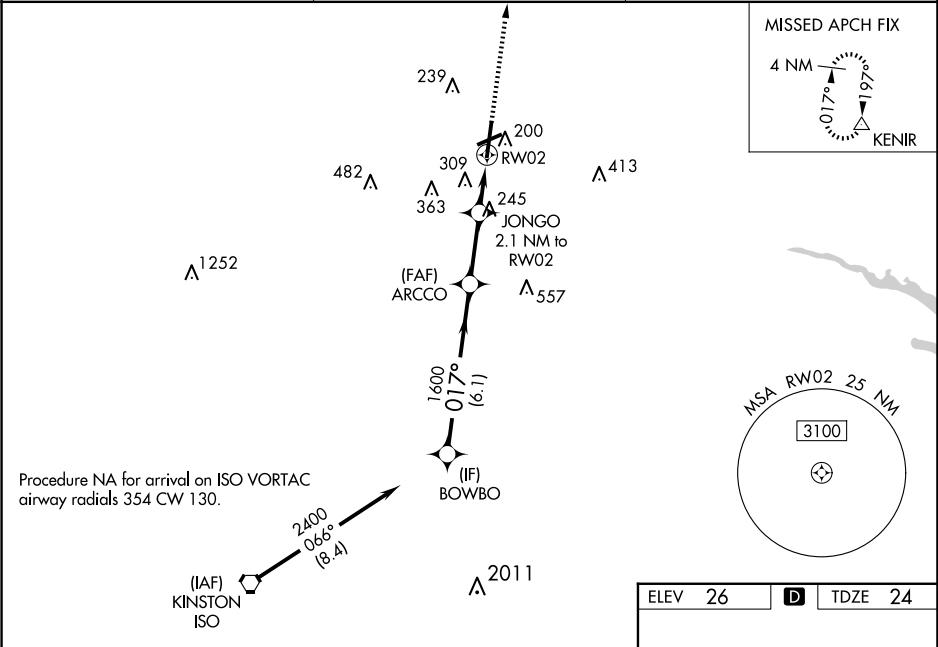
▼

▲

Baro-VNAV NA when using Washington altimeter setting. For uncompensated Baro-VNAV systems, LNAV/VNAV NA below -15°C or above 50°C. Rwy 2 helicopter visibility reduction below ¾ SM NA. When local altimeter setting not received use Washington altimeter setting and increase LPV DA to 444 feet, visibility all Cats ½ SM; increase LNAV/VNAV DA to 661; increase all MDAs 60 feet, LNAV visibility Cat C and D and Circling Cat D ¼ SM. VDP NA when using Washington altimeter setting.

MISSED APPROACH: Climb to 2100 direct KENIR and hold.

AWOS-3 128.425	WASHINGTON CENTER 123.85 279.65	UNICOM 122.8 (CTAF) 1
-------------------	------------------------------------	--------------------------



ELEV 26	D	TDZE 24
---------	---	---------

