

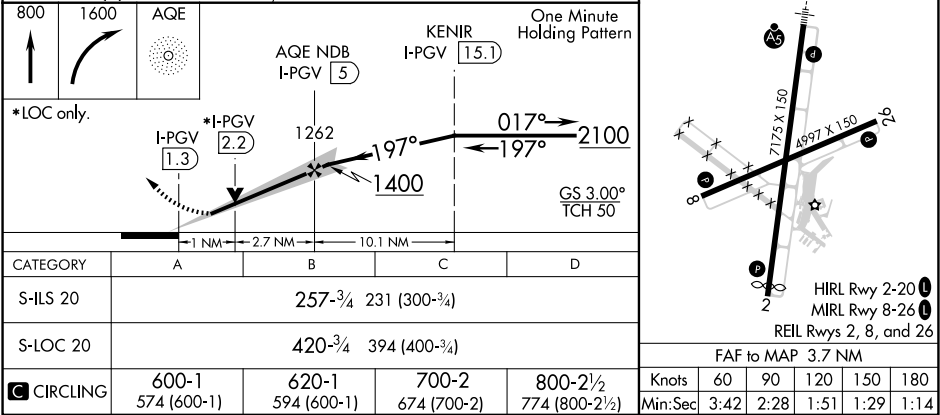
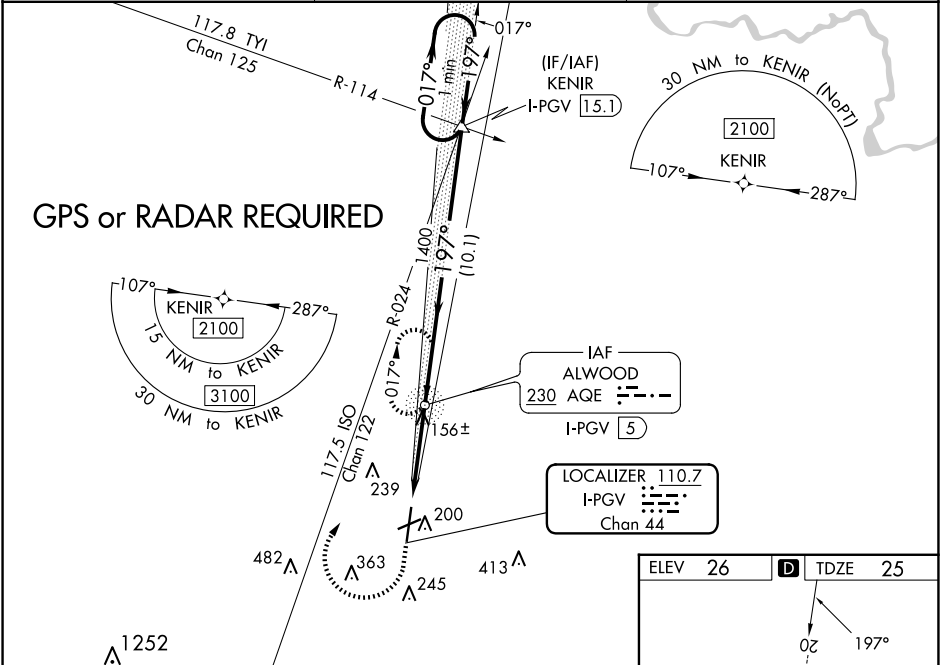
LOC/DME I-PGV 110.7 Chan 44	APP CRS 197°	Rwy Idg 6505 TDZE 25 Apt Elev 26	ILS Y or LOC Y RWY 20 PITT-GREENVILLE (PGV)
---	------------------------	---	--

ADF required. VDP NA with Washington altimeter setting. When local altimeter setting not received use Washington altimeter setting and increase S-ILS 20 DA to 298 feet; increase all MDAs 60 feet and S-LOC 20 visibility Cat C/D ½ SM, and Circling visibility Cat D ¼ SM. For inop ALS when using Washington altimeter setting, increase S-ILS 20 all Cats visibility ¾ SM, and S-LOC 20 visibility Cat A/B ¼ SM. Inop table does not apply to S-ILS all Cats. Rwy 20 helicopter visibility reduction below ¾ SM NA. For inop ALS, increase S-LOC 20 visibility Cat A/B ¼ SM, Cat C/D ¾ SM.

MALSR

MISSED APPROACH: Climb to 800 then climbing right turn to 1600 direct AQE NDB and hold.

AWOS-3 128.425	WASHINGTON CENTER 123.85 279.65	UNICOM 122.8 (CTAF) 1
--------------------------	---	---------------------------------



SE-2, 07 AUG 2025 to 04 SEP 2025

SE-2, 07 AUG 2025 to 04 SEP 2025