

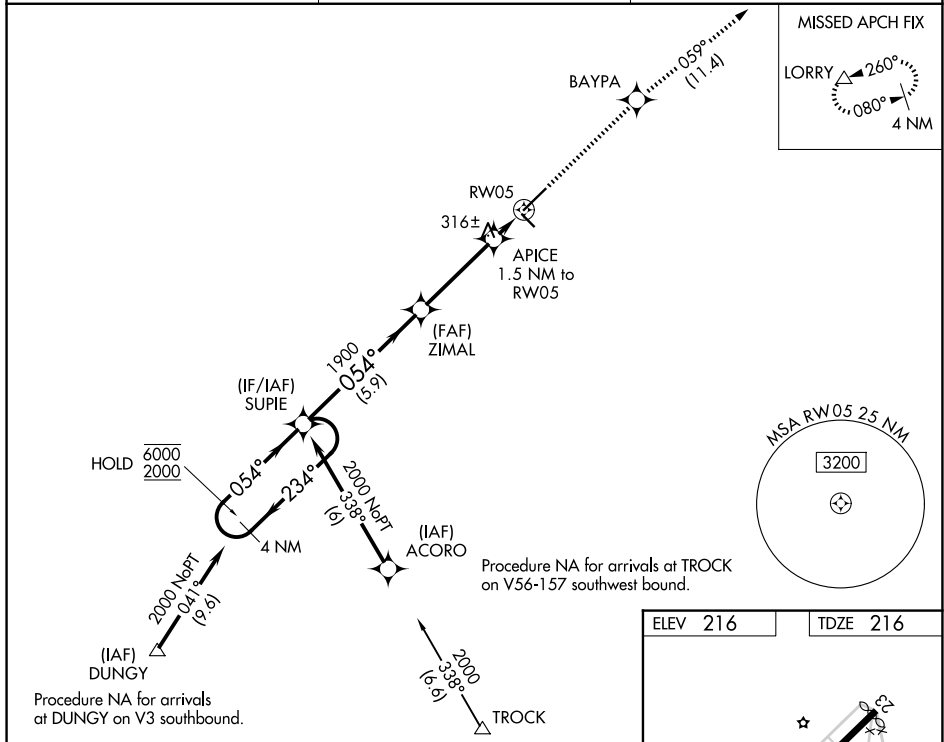
WAAS CH 90423 W05A	APP CRS 054°	Rwy Ldg 6503 TDZE 216 Apt Elev 216
--	------------------------	---

RNAV (GPS) RWY 5

LAURINBURG/MAXTON (MEB)

RNP APCH.		
<p>T Circling to Rwy 13 and 31 NA at night. For uncompensated Baro-VNAV systems, LNAV/VNAV NA below -15°C or above 42°C. For Inop ALS, increase LNAV/VNAV all Cats visibility to ¾ SM, and LNAV Cat C/D visibility to 1 SM.</p> <p>A</p>	<p>MALSR</p>	<p>MISSED APPROACH: Climb to 2400 direct BAYPA and on track 059° to LORRY and hold.</p>

ASOS 134,125	FAYETTEVILLE APP CON 127.8 343,725	UNICOM 122.8 (CTAF) 0
------------------------	--	---------------------------------



4 NM Holding Pattern

SUPIE

ZIMAL 1900

APICE 1.5 NM to RW05

*1 NM to RW05

*LNAV only.

RW05

GP 3.00° TCH 51

1900

*740

5.9 NM 3.4 NM 0.5 NM 1 NM

2400	BAYPA	tr 059°	LORRY
------	-------	---------	-------

CATEGORY		A		B		C		D	
LPV	DA	416-1/2		200 (200-1/2)					
LNAP/ VNAV	DA	472-1/2		256 (300-1/2)					
LNAP	MDA	580-1/2	364 (400-1/2)	580-5/8		364 (400-5/8)			
CIRCLING		740-1	524 (600-1)	780-1 1/2 564 (600-1 1/2)		1020-2 1/2 804 (900-2 1/2)			

