

WAAS  
CH **82520**  
**W33A**

APP CRS  
**330°**

Rwy Idg **4782**  
TDZE **471**  
Apt Elev **475**

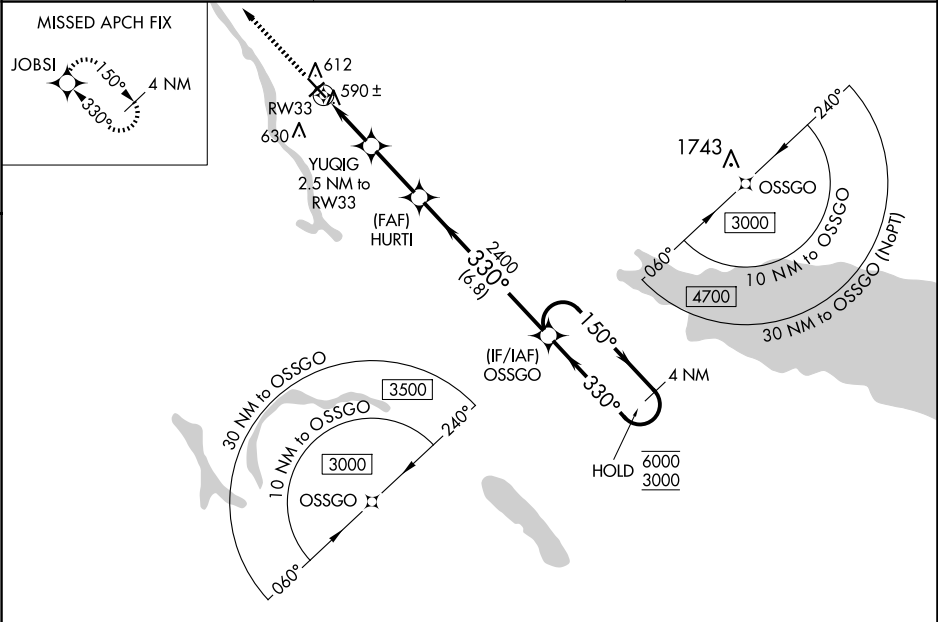
**RNAV (GPS) RWY 33**  
OSWEGO COUNTY (FZY)

RNP APCH.

Rwy 33 helicopter visibility reduction below ¾ SM NA. For uncompensated Baro-VNAV systems, LNAV/VNAV NA below -22°C or above 54°C.

MISSED APPROACH: Climb to 3000 direct JOBSI and hold.

ASOS <b>119.275</b>	SYRACUSE APP CON <b>126.125 269.125</b>	UNICOM <b>123.0 (CTAF)</b>
------------------------	--	-------------------------------



ELEV **475** TDZE **471**

3000 JOBSI

\* LNAV only

YUGIG 2.5 NM to RW33

HURTI 2400

RW33

OSSGO

0.9 NM to RW33

1440\*

2400

150° 6000

330° 3000

GP 3.55° TCH 36

4 NM Holding Pattern

CATEGORY	A	B	C	D
LPV DA	810-1	339 (400-1)		NA
LNAV/VNAV DA	771-7/8	300 (300-7/8)		NA
LNAV MDA	840-1	369 (400-1)		NA
CIRCLING	920-1 445 (500-1)	940-1 465 (500-1)	960-1½ 485 (500-1½)	NA

MIRL Rwys 6-24

HIRL Rwys 15-33

REIL Rwys 15 and 33

REIL Rwys 6 and 24