

APP CRS  
240°

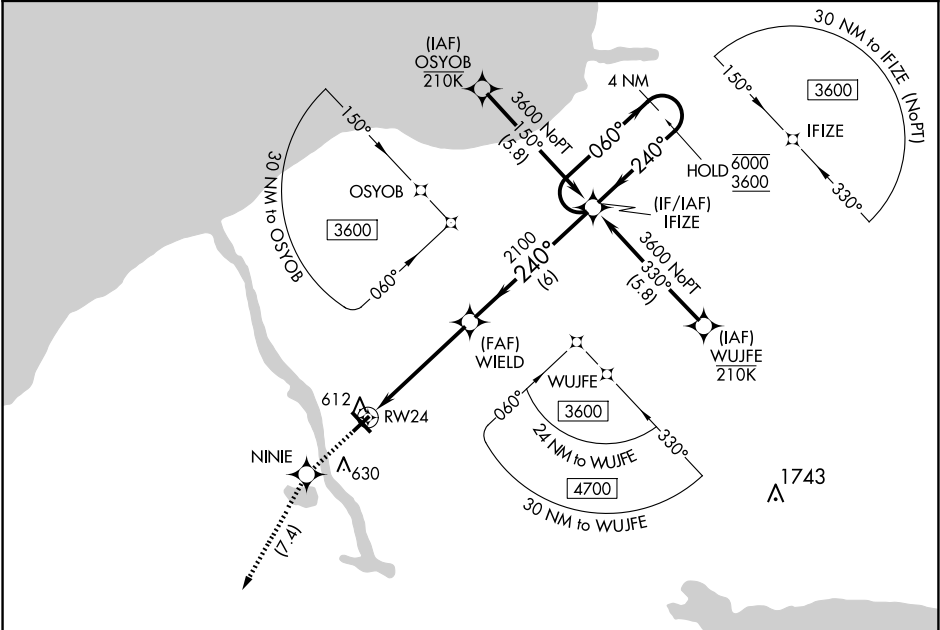
Rwy Idg  
TDZE  
Apt Elev

3997  
469  
475

RNAV (GPS) RWY 24

OSWEGO COUNTY (FZY)

RNP APCH - GPS.		MISSED APPROACH: Climb to 3000 direct NINIE and left turn direct LYSAN and hold, continue climb-in-hold to 3000.
Rwy 24 helicopter visibility reduction below 1 SM NA.		
ASOS 119.275	SYRACUSE APP CON 126.125 269.125	UNICOM 123.0 (CTAF) 0



ELEV 475

TDZE 469

3000

NINIE

LYSAN

WIELD

IFIZE

4 NM Holding Pattern

6000

3600

2100

3.00° TCH 40

5 NM

6 NM

CATEGORY	A	B	C	D
LNAV MDA	960-1	491 (500-1)	960-1 $\frac{3}{8}$	491 (500-1 $\frac{3}{8}$ )
CIRCLING	960-1	485 (500-1)	960-1 $\frac{1}{2}$ 485 (500-1 $\frac{1}{2}$ )	1040-2 565 (600-2)

MIRL Rwy 6-24 0

HIRL Rwy 15-33 0

REIL Rwy 15 and 33 0

REIL Rwy 6 and 24